

Square White Slim Panel Lights

4" 5CCT White&Black **Wet Location**



Color Changeable



IC Rating



Dimmable



Energy Star



Intertek
ETL

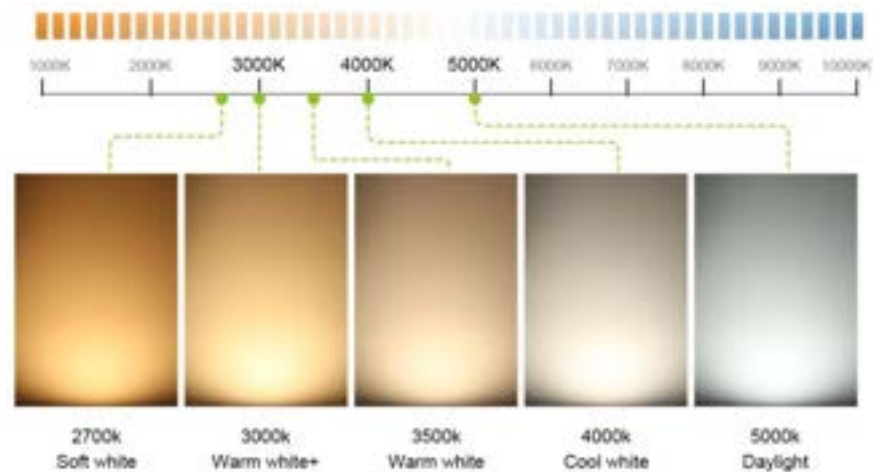


DIP Switch Color Changeable:



Timesaver and Changing Color according to different Application.

Three Color Setting Switch





Features

1. 4inch 9W , 6inch 12W
2. With Junction box, compatible for North America's installation regulation requirement.
3. ETL Energy Star approved, 5 years warranty.
4. Triac dimmable.

Notice:

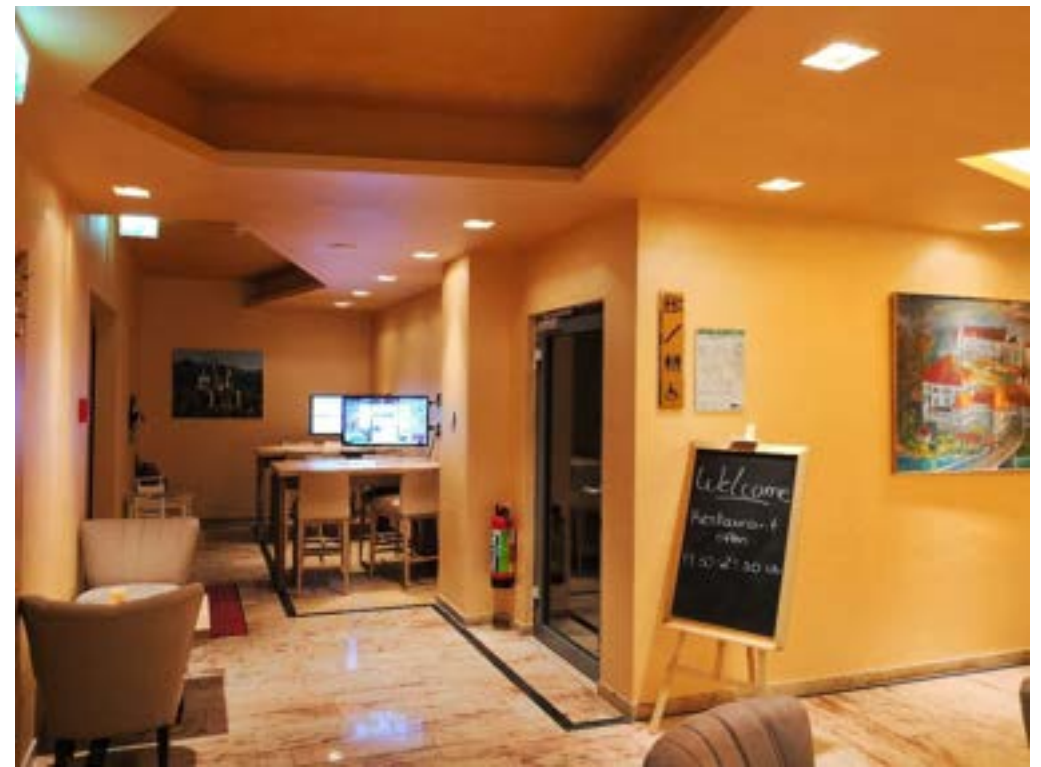
1. Cutting off the electricity before installation.
2. Installation can only be done by qualified electrician.
3. Input voltage is AC120V 50/60Hz. Please kindly confirm the voltage before installation.
4. If the down lights can't work normally, please contact our customer service.
5. It will be out of warranty if damage is caused by personal mistake.

Specification for Order Form

Size	Voltage	Watt	Lighting Color	CCT	Dimmable	Certificates
4 inch	AC120V	9W	5CCT(2.7K/3K/3.5K/4K/5K All in one)	5CCT	YES	ETL Energy Star

Application

- 1- Bathroom, office, factory, warehouse, parking lot;
- 2- market, school, library, hospital, museum;
- 3- home lighting;

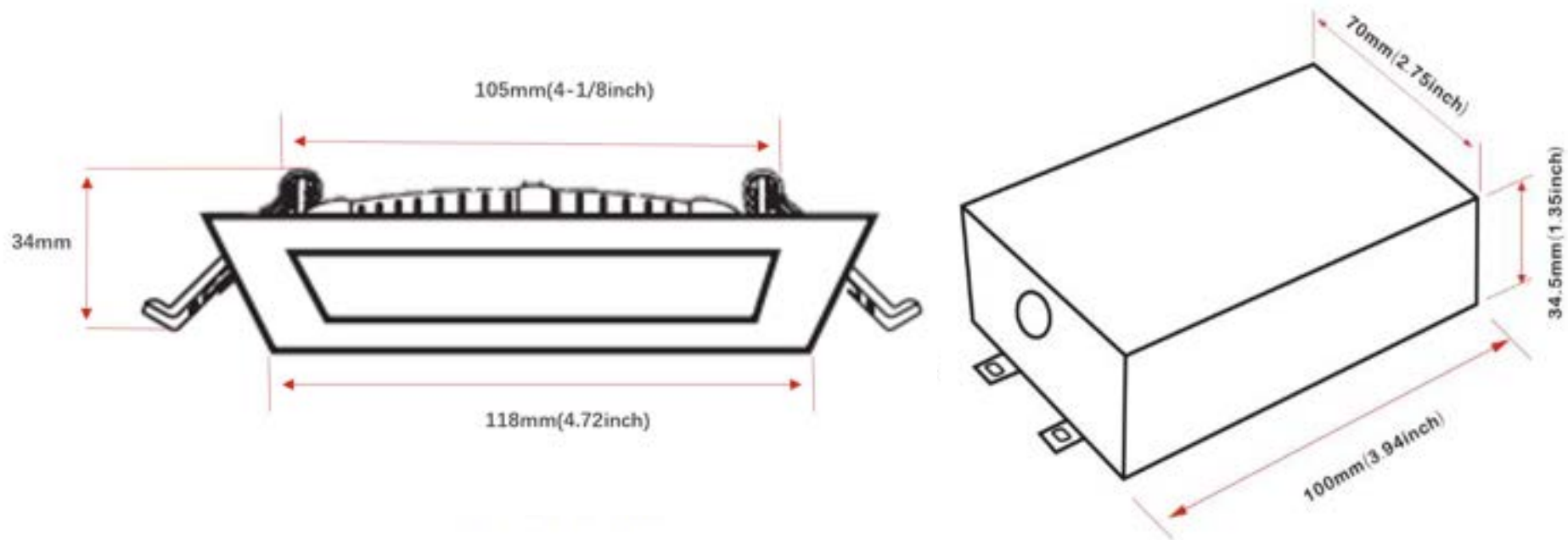


Certificates



Drawing

4 INCH :



Type	Value
Outer Diameter	4.72 INCH
Cut Hole	4-1/8 INCH
Height (Panel)	0.47INCH
Height (Junction Box)	1.35INCH
Length (Junction Box)	3.94INCH
Width (Junction Box)	2.75INCH

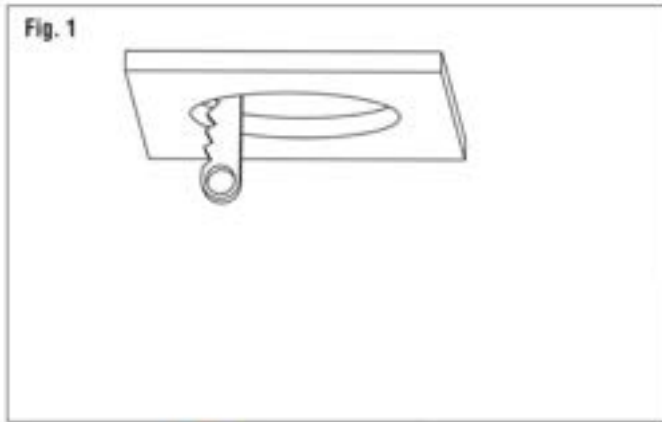
Parameters

Electrical Characteristics	
Input Voltage	120V AC 50~60Hz
Rated Power	9W
Replacement	9W=80W Halogen
Installation of LED Driver	External
Type of LED Driver	Constant current output
Power Factor	0.95~0.98
Operating Temperature	-10℃-40℃

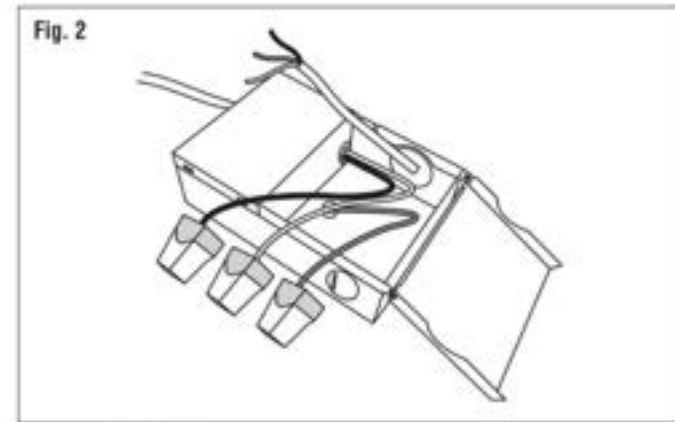
Optical Characteristics	
LED Type	SMD2835
Brand of LED Chip	Taiwan Epistar
Lumen	750lm
Life Span Based on 3hrs/day	45years
CRI	>90
Beam Angle	180 degree
CCT	5CCT (2700K/3000K/3500K/4000K/5000K all in one)

Other	
Energy Level	A
Warranty	5 years
Working Hours	50,000hrs
IP range	IP54
Material	Aluminum housing with PMMA lampshade

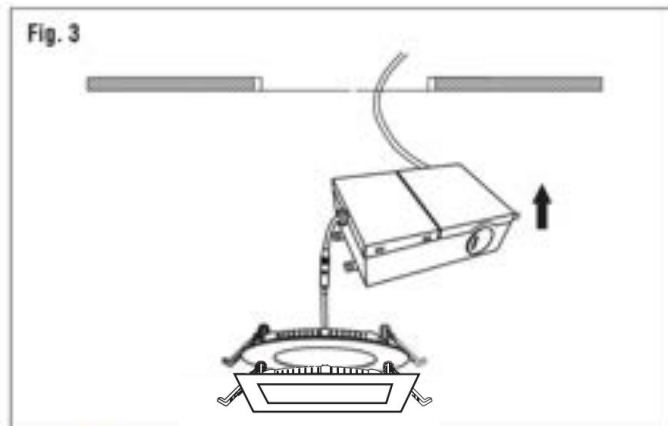
Installation



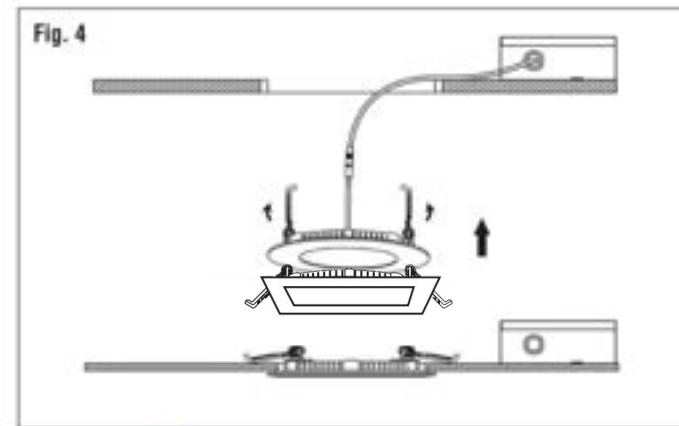
1 Cut a Hole



2 Connect Wiring



3 Put and Connect



4 Mount Light

Packaging



SIZE	QTY/CTN	G.W	CBM	Note
4 INCH	40PCS	16.5KGs	0.076	Customer Color package can be offered