

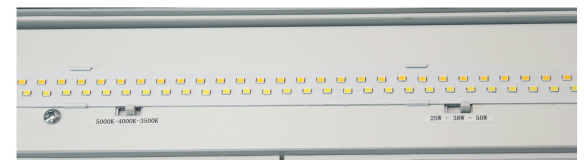
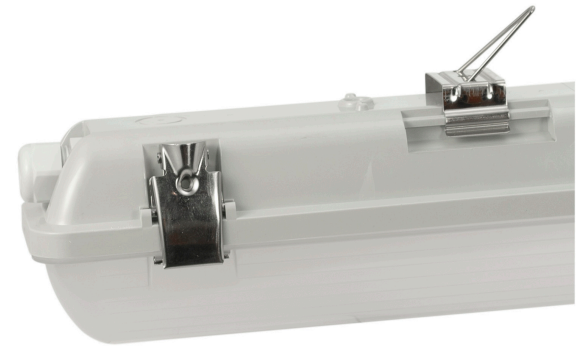
Sunlite 85260 LED 4-Foot Linear Vapor Proof Fixture, Power Selectable 25W/38W/50W, Color Selectable 35K/40K/50K, 7000 Lumens, Dimmable, 120-277 Volts, ETL Listed, For Residential & Commercial Use

DESCRIPTION:

Discover the ultimate lighting solution with Sunlite's 4-foot LED vapor proof fixtures, offering energy efficiency and maintenance-free convenience. These fixtures provide instant full brightness with no warmup time, outperforming traditional fluorescent options. Designed with a durable frosted polycarbonate lens and robust plastic body, they ensure even light distribution and a reliable 50,000-hour lifespan with no bulbs to replace. Customize your lighting experience by selecting from 3500K, 4000K, or 5000K color temperatures and selectable wattages of 25W/38W/50W, providing a brilliant output of up to 7000 lumens. Adjust the lighting output using an LED-compatible dimmer switch (0-10V) and enjoy a wide 128-degree beam spread to create the perfect mood. ETL Listed for wet locations and compatible with 120-277V service, these fixtures are designed for safety and versatility. Easy to install with included mounting hardware and instructions, the fixtures measure 49.7" L x 3.42" W x 3.34" H, providing a sleek and modern lighting solution for any space.

FEATURES:

- **LED TECHNOLOGY** - These 4-foot LED vapor proof linear fixtures are an energy efficient and maintenance free solution to your lighting needs. Unlike fluorescent fixtures, LEDs are instant on at full brightness with no warmup time. This dimmable fixture features a durable frosted polycarbonate lens and a durable plastic body for even light distribution.
- **ENERGY EFFICIENT** - Estimated annual energy costs of \$2.17/\$3.01/\$4.58 (Based on 3 hours/day at \$0.11/kWh). 50,000-hour life span with no bulbs to replace provides years of reliable service while saving time and maintenance costs.
- **COLOR & POWER SELECTABLE** - This fixture allows you to choose the color temperature and wattage at any time. Select 3500K, 4000K or even 5000K depending on your preference using a switch located inside of the fixture. Take control of the light emitted with its selectable wattage of 25W/38W/50W with a bright lumen output of 3500/5400/7000 lumens depending on wattage setting.
- **DIMMABLE** - The lighting output can be changed when connected to an LED-compatible dimmer switch (0-10v), with a beam spread of 128 degrees, allowing it to adapt to any lighting to suit the mood.
- **ETL LISTED**- This fixture is ETL Listed for wet location. IP66 Rated. Operates on 120-277-volt service. Mounting hardware and installation instruction included. Fixture dimensions are 49.7" L x 3.42" W x 3.34" H.



SPECIFICATIONS:

General Characteristics

Bulb Shape	Integrated LED
Finish	White
Dimmable	Yes
Dimming Type	0-10V Low Voltage
Dimming Percentage	0-100%
Lens Finish	White
Bulb Type	Integrated

Electrical Characteristics

Watts	25/38/50
Volts	120-277
LED Chip Manufacturer	2835
Power Factor	0.9
Temperature	-40°F~104°F

Light Characteristics

Lumens Brightness	3500/5400/7000
Color Rendering Index CRI	80
Emitted Color	CCT Selectable
Color Temperature Kelvin	35K/40K/50K

Fixture Characteristics

Shape	Linear
Number of Lights	1
Mounting	Surface
Motion Sensor	Yes
Fixture Technology	LED
Use Location	Indoor

Additional Features

Safety Rating Mark	ETL Listed - Wet Location
Safety Rated For Canada	Yes
Safety Rated For USA	Yes
DLC	Yes
DLC Number	S-4C1J9R
DLC Classification	Standard
Mercury Free	Yes

Product Dimensions

Size	4'
Item Dimension (in)	(W) 3.42 (H) 3.34 (D) 49.7
Package Dimension (in)	(W) 3.6 (H) 2.5 (D) 50.1
Package Weight (lb)	4.35

Product Data

Case Unit Rate	4
Pack Size	1
Item UPC	653703852607
Warranty Years	5

