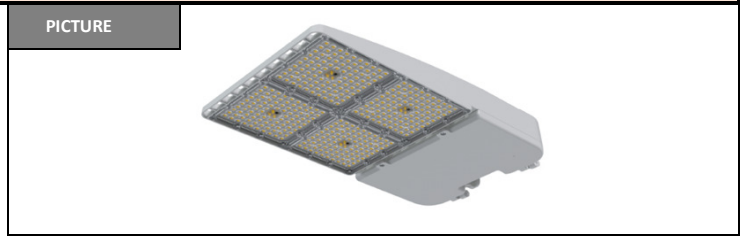


Version	V2.0	Date	8/15/2022
Prepared By	J.C		

PRODUCT SPECIFICATION

Category	Slim Area Light
Item Number	9629
Stock Code	FXSAL320/840/WH/T3
Mounting	Pole Mount / Slip Fitter / Yoke Mount/ Wall Mount
Housing Color	White (RAL# 9003)



ELECTRICAL CHARACTERISTICS

Rated Wattage (W)	320	Replacement Wattage (W)	1000W-1500W
Tested Wattage (W)	-		
Input Voltage (V)	120~277	Surge Protect Level	10KV
Voltage Frequency (Hz)	50/60HZ		
Input Current (A)	2.91	Dimmable	0 - 10V
Power Factor	>0.9	AUX (12V) Line	Yes
THD	≤ 20%		

PHOTOMETRIC CHARACTERISTICS

Lumen (lm)	44,800	CCT (K)	4000K
Efficacy (lm/w)	140lm/w	Beam Angle (°)	Type III
CRI	>80		

GENERAL CHARACTERISTICS

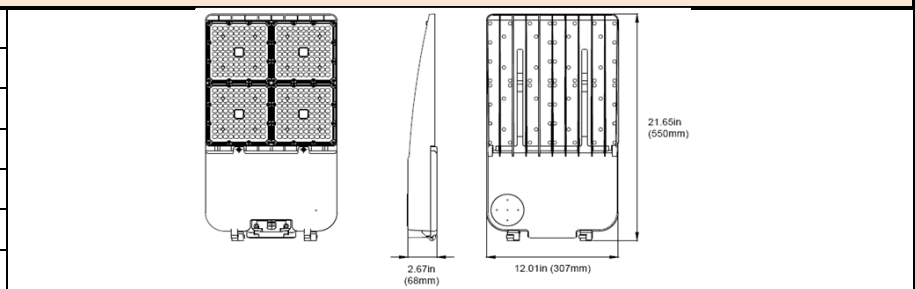
Operating Temperature (°F)	-40 ~ 122
Storage Temperature (°F)	-40~140
IP Rating	IP66
Rated Life	50000 hrs.
Warranty	5 Years

ACCESSORIES

Item #	Stock Code	Description
P10458	MT-AL/PM6/WH	Mount - Area Light Pole Mount 6" White
P10460	MT-AL/SF/WH	Mount - Area Light Slip Fitter White
P10461	MT-SAL/YK12/WH	Mount - Area Light Yoke mount 12" White
P10474	MT-AL/WM/WH	Mount - Area Light wall mount White
P10371	SEN-BRI619	Sensor - 0-10V IP66 12-24V IR head
P10467	LENS-SAL-T4-G1	Lens - Type IV lens

PRODUCT DIMENSIONS

Length- in (mm)	21.65" (550mm)
Width- in (mm)	12.01" (307mm)
Height- in (mm)	2.67" (68mm)
EPA (ft²)	0.25ft² (@ 0 deg)
Weight (lbs)	15.5 lbs
Mounting Height (ft)	20-40ft
Cable Length (ft)	1.64ft



CERTIFICATIONS

UL/ETL	ETL, cETL	CEC	
NSF/ETL Sanitation		JA8	
Energy Star		FCC	YES
DLC	V5.1 Premium	RoHs	YES

DOCUMENTS

LM79	YES	IES File	YES
LM80	YES	Dimmer List	

COMMENTS

--	--	--	--