



CLQ18WH/8XX-EB	
Std. Pack Qty.	50
Order Code	CLQ18WH/827-EB
	CLQ18WH/835-EB
	CLQ18WH/850-EB
	CLQ18WH/830-EB
	CLQ18WH/840-EB

PRODUCT SPECIFICATION

COMPACT LED RETROFIT BULB

GENERAL CHARACTERISTICS

Lamp Type	Compact LED Retrofit Ballast Compatible Bulb
Voltage	120-277V, or 347V (Depend on Ballast Spec)
Base	G24q
Lamp Wattage	9
System Wattage	12
Rated Avg. Life (hrs)	50,000
Replacement	18W, 26W, 32W, 42W CFQ

PHOTOMETRIC CHARACTERISTICS

Initial Lumens	1000
Beam Angle	120
Color Temperature	2700K
	3500K
	5000K
	3000K
	4000K
Color Rendering Index (CRI)	82

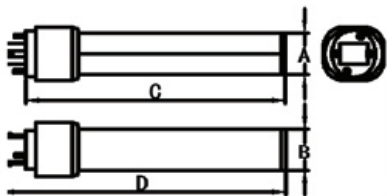
DIMENSIONS

Overall Length (inches) (D)	6.65
Base Face to Top of Lamp (inches) (C)	6.06
Front (inches) (A)	1.1
Side (inches) (B)	1.1

FEATURES

- Comply with UL 1993, UL8750
- Comply with FCC 47 Part 15 Class B
- Work with electronic ballast (instant start, rapid start and program start)
- No UV, No Mercury
- Quick Installation
- High Lumen
- Extended Life
- High Quality Color Rendering
- Five Year Limited Warranty

Dimension Layout



DLC Information



Order Code	DLC Product ID	DLC Product Model	DLC Version
CLQ18WH/827-EB	PLLRPQHX6HJK	CLQ18WH/827-EB	5
CLQ18WH/830-EB	PLCNBLI98JQ2	CLQ18WH/830-EB	5
CLQ18WH/835-EB	PLY2DJOVU1DN	CLQ18WH/835-EB	5
CLQ18WH/840-EB	PLZADDIS0EGI	CLQ18WH/840-EB	5
CLQ18WH/850-EB	PL8IIUU4AGSH	CLQ18WH/850-EB	5

* Please refer to "[Ballast Compatibility List](#)" on Related Downloads.

Specification data is based on tests performed in a controlled environment and represents relative performance. Actual performance can vary depending on operating conditions. Application and performance data subject to change without notice. All specifications are nominal unless noted otherwise.