

LED HID Retrofit Lamp Instructions



Can not use the electric generator to test the LED lamp. Please avoid using the led fixture in environment where there is smoke, sulfur, and corrosive substances. If used in such environment, make sure the led fixture is well protected by an enclosed lampshade whose dimension is no less than below size, and whose material is either glass or semi-glass, semi-metallic. Surface of the lampshade shall not have any covering which prevents heat dissipation.



LED HID Retrofit Lamp Instructions

Product features:

- ◆ 12W - 120W Wattage Options.
- ◆ 3 CCT Selectable 3000K / 4000K / 5000K.
- ◆ 36W - 120W Wattage selectable (Ships at highest output which is in the ordering logic).
- ◆ Lumen output from 1680 to 18600 (50W to 400W Replacement).
- ◆ LineConnect Type B Wiring with AC 100-277V.
- ◆ Motion Sensor option available on 80W, 100W and 120W lamps.
- ◆ Clear Durable Polycarbonate lens.
- ◆ Aluminum housing with efficient heat sink design for heat dissipation.

Application:

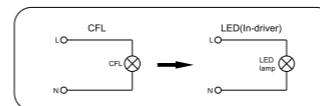
Supermarket, warehouse, garage, home, office, hotel, hospital, school, street, garden and many more.



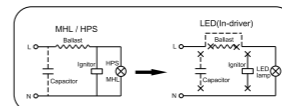
Installation Instructions:

Warning: Please make sure the power is off before installation.

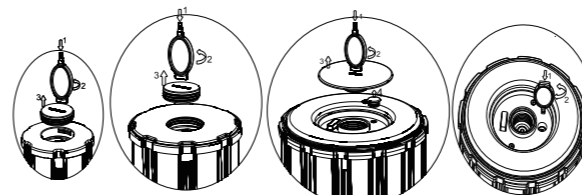
1. Turn off the power switch.
2. Screw off the CFL, MHL, HPS or other existing lamp.
3. Disconnect ballast before installing LED HID Retrofit which has an AC Internal driver.
4. Wire line voltage as shown in Figure 1 & 2.
5. Adjust lamp CCT and/or dimming by removing the top plastic cover with tool or screwdriver. (See figure 3 and CCT adjustable, wattage selectable mode diagram in page 4).
6. If Security rope is provided, fix the rope to the lamp using the hook. Then, attach the other end to the luminaire. (See figure 5).
7. Screw LED HID Retrofit lamp into socket (Figure 6-9).
8. Turn on Power.



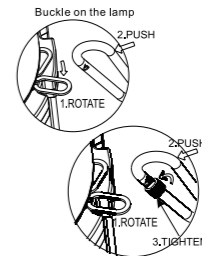
Figure(1)



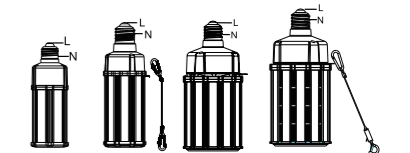
Figure(2)



Figure(3)



Figure(4)

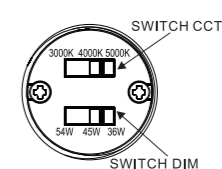


Figure(5) Figure(6) Figure(7) Figure(8)

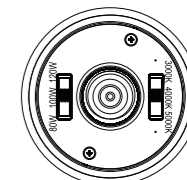
CCT adjustable and wattage selectable mode diagram:

Wattage selection options

Set Wattage	Wattage Selection Options		
27W	12W	18W	27W
36W	18W	27W	36W
45W	27W	36W	45W
54W	36W	45W	54W
63W	36W	54W	63W
80W	54W	63W	80W
100W	63W	80W	100W
120W	80W	100W	120W



CCT Adjustable 27-63W



CCT Adjustable 80-120W

Installation of motion sensor or PIR sensor

To install motion sensor, remove top plastic cover with tool or screwdriver as shown below. Once you have CCT and wattage selected, install motion sensor as shown in Figure 3 and tighten. Use remote control to commission (one remote needed per job.)

Note: the motion sensor has no dialing code, and a remote control is needed for adjustment. Please refer to the instruction for remote control adjustment.

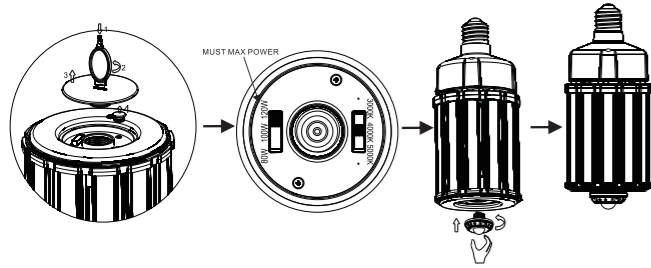


Figure 1

Figure 2

Figure 3

Figure 4

MIN. LAMP COMPARTMENT DIMENSIONS(L x W x H)

Model Number	Minimum Lamp Compartment Dimension(mm)(H)x(L)x(W)
HID12-CS-E26-LED	300 X 180 X 180
HID18-CS-E26-LED	320 X 190 X 190
HID27-CS-E26-LED	340 X 200 X 200
HID36-CS-E26-LED HID36-CS-EX39-LED	380 X 200 X 200
HID45-CS-E26-LED HID45-CS-EX39-LED	420 X 210 X 210
HID54-CS-E26-LED HID54-CS-EX39-LED	420 X 210 X 210
HID80-CS-EX39-LED	420 X 230 X 230
HID100-CS-EX39-LED	440 X 240 X 240
HID120-CS-EX39-LED	440 X 260 X 260

WARNING:

WARNING – Risk of fire or electric shock. LED Retrofit Kit installation requires knowledge of luminaries electrical systems. If not qualified, do not attempt installation. Contact a qualified electrician.

WARNING – Risk of fire or electric shock. Install this kit only in the luminaires that have the construction features and dimensions shown in the photographs and/or drawings and where the input rating of the retrofit kit does not exceed the input rating of the luminaire.

WARNING – To prevent wiring damage or abrasion, do not expose wiring to edges of sheet metal or other sharp objects. Do not make or alter any open holes in an enclosure of wiring or electrical components during kit installation.

THE RETROFIT KIT IS ACCEPTED AS A COMPONENT OF A LUMINAIRE WHERE THE SUITABILITY OF THE COMBINATION SHALL BE DETERMINED BY AUTHORITIES HAVING JURISDICTION. PRODUCT MUST BE INSTALLED BY A QUALIFIED ELECTRICIAN IN ACCORDANCE WITH THE APPLICABLE AND APPROPRIATE ELECTRICAL CODES. THE INSTALLATION GUIDE DOES NOT SUPERSEDE LOCAL OR NATIONAL REGULATIONS FOR ELECTRICAL INSTALLATIONS. SUITABLE FOR DAMP LOCATIONS. ADDED WEIGHT OF THE DEVICE MAY CAUSE INSTABILITY OF A FREE STANDING PORTABLE LUMINAIRE. USE ONLY WITH A PORTABLE TABLE LAMP THAT IS PROVIDED WITH A SHADE. USE IN PORTABLE TABLE LAMPS IN WHICH THE DISTANCE FROM THE BOTTOM OF THE BASE TO THE TOP OF THE LAMPHOLDER DOES NOT EXCEED THREE (3) TIMES THE MINIMUM BASE DIAMETER. THIS DEVICE IS NOT INTENDED FOR USE WITH EMERGENCY EXITS” or “NOT FOR EMERGENCY LIGHTING.

AVERTISSEMENT:

Avertissement- Precautionnez-vous contre des chocs électriques. L'installation des pièces de rechange LED est seulement en charge des professionnels.

Precautionnez-vous contre feu. Installer des pièces de rechange selon les spécifications, veiller à ce que la puissance d'entrée ne dépasse pas la puissance d'entrée de remplacement de la lampe.

Ne faites pas de contact avec le câble pointus ou métalliques, afin d'éviter le fil usé.

Ne pas modifier la structure du circuit fermé et les composants électroniques ou forage sur celui-ci lors de l'installation des pièces de rechange

LA TROUSSE DE RÉNOVATION EST ACCEPTÉE COMME UN ÉLÉMENT D'UN LUMINAIRE OÙ L'ADÉQUATION DE LA COMBINAISON DOIT ÊTRE DÉTERMINÉE PAR LES AUTORITÉS COMPÉTENTES. LE PRODUIT DOIT ÊTRE.

INSTALLÉ PAR UN ÉLECTRICIEN QUALIFIÉ CONFORMÉMENT AUX CODES ÉLECTRIQUES APPLICABLES ET APPROPRIÉS. LE GUIDE D'INSTALLATION NE REMPLACE PAS LES RÉGLEMENTATIONS LOCALES OU NATIONALES POUR LES INSTALLATIONS ÉLECTRIQUES. CONVIENT AUX EMBLEMES HUMIDES LE DISPOSITIF CONSTITUE UN POIDS SUPPLÉMENTAIRE CE QUI PEUT CAUSER L'INSTABILITÉ D'UN LUMINAIRE PORTATIF AUTONOME UTILISER UNIQUEMENT AVEC UNE LAMPE DE TABLE DOTÉE D'UN ABAT-JOUR UTILISER AVEC UNE LAMPE DE TABLE POUR LAQUELLE LA DISTANCE ENTRE LA PARTIE INFÉRIEURE DU SOCLE ET LA PARTIE SUPÉRIEURE DE LA DOUILLE DE LAMPE N'EST PAS SUPÉRIEURE À 3 FOIS LE DIAMÈTRE MINIMAL DU SOCLE NE CONVIENT PAS AUX SORTIES DE SECOURS