

LED UFO HIGHBAY



FEATURES AND SPECIFICATIONS

Construction

- Die-cast Aluminum housing with powder coat finish.
- UV Stabilized polycarbonate lens.
- Wattage and CCT selectable.
- Complete accessories for option

Electrical

- Lens cover : 110° ,90°
- 120-277V;277-480V ,
- Lens IK grade: IK08 for PC lens ·
- LED source: Lumileds

Applications

- used for warehouse, factory, airport, other high bay applications.

Installation

- Hook, Yoke

Distribution

- 90°

Listing

- ETL&DLC

Warranty

- 5-year limited warranty

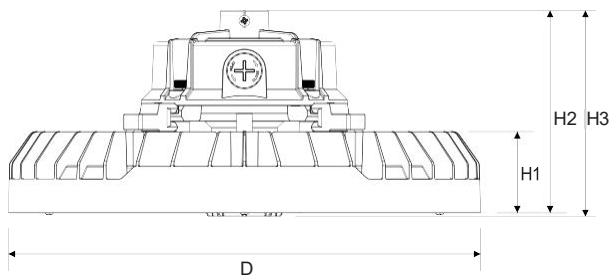
Specs at a Glance		* Nominal Wattage (Switchable)		
Configuration	J-UFO12-150W/120W/100W-L-(30/40/50)K-Y	J-UFO12-240W/200W/150W-L-(30/40/50)K-Y	J-UFO12-150W/120W/100W-H-(30/40/50)K-Y	J-UFO12-240W/200W/150W-H-(30/40/50)K-Y
CCT (K)	3000K 4000K 5000K Color Tunable			
Wattage (W)*	100W/120W/150W wattage adjustable	150W/200W/240W wattage adjustable	100W/120W/150W wattage adjustable	150W/200W/240W wattage adjustable
Lumens (lm)	100W=14000lumens 120W=16800lumens 150W=21000lumens	150W=21000lumens 200W=28000lumens 240W=33600lumens	100W=14000lumens 120W=16800lumens 150W=21000lumens	150W=21000lumens 200W=28000lumens 240W=33600lumens
Efficacy (LPW)	Up to 140LM/W			
CRI	>80			
Input Voltage	120-277V		277-480V	
Operating Temp	"-30 to 50°C"			
Certification	ETL&DLC			
Warranty	5 year warranty			

Ordering information

Model	Description
J-UFO12-150W/120W/100W-L-(30/40/50)K-Y	UFO highbay, Power Switchable 100W/120W/150W, Color Switchable 3000K/4000K/5000K 120-277VAC
J-UFO12-240W/200W/150W-L-(30/40/50)K-Y	UFO highbay, Power Switchable 150W/200W/240W, Color Switchable 3000K/4000K/5000K 120-277VAC
J-UFO12-150W/120W/100W-H-(30/40/50)K-Y	UFO highbay, Power Switchable 100W/120W/150W, Color Switchable 3000K/4000K/5000K 277-480VAC
J-UFO12-240W/200W/150W-H-(30/40/50)K-Y	UFO highbay, Power Switchable 150W/200W/240W, Color Switchable 3000K/4000K/5000K 277-480VAC



Dimensions



Power	D	H1	H2	H3
150W	Ø240mm 9.45"	50mm 1.97"	127mm 5.00"	129mm 5.08"
240W	Ø300mm 11.81"	50mm 1.97"	127mm 5.00"	129mm 5.08"
AC	Cable length Tin plated bare wire head, Exposed length 0.3m			
Control	Tin plated bare wire head, Exposed length 0.3m			

Accessories



PC reflector



Safety rope



U bracket



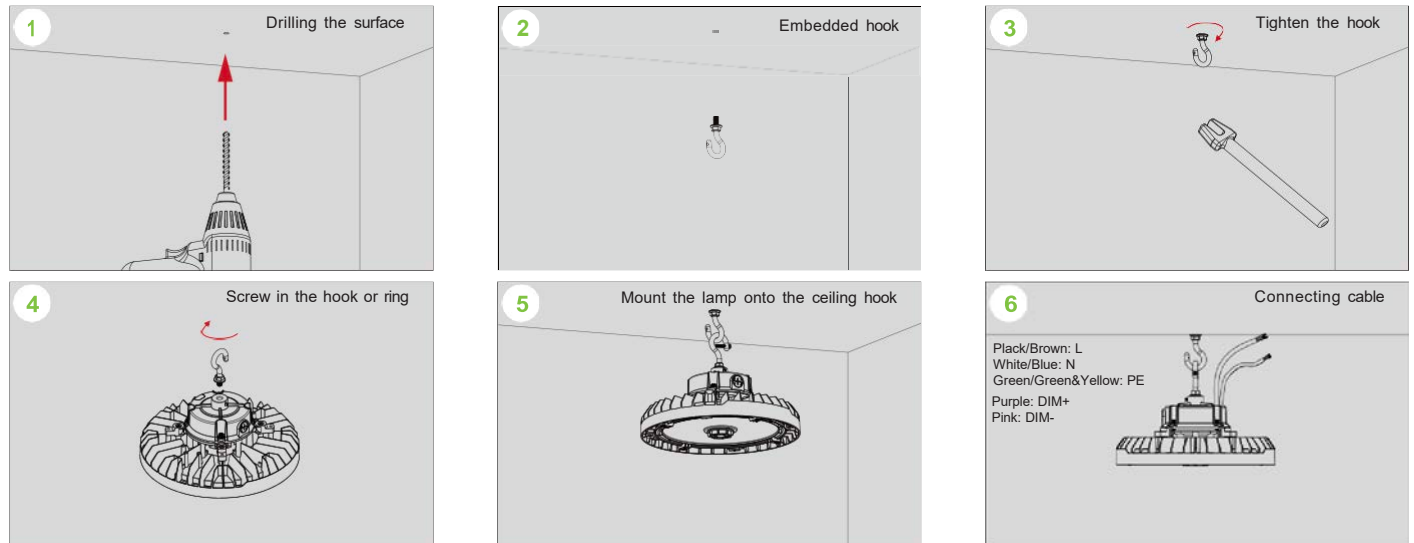
Sensor



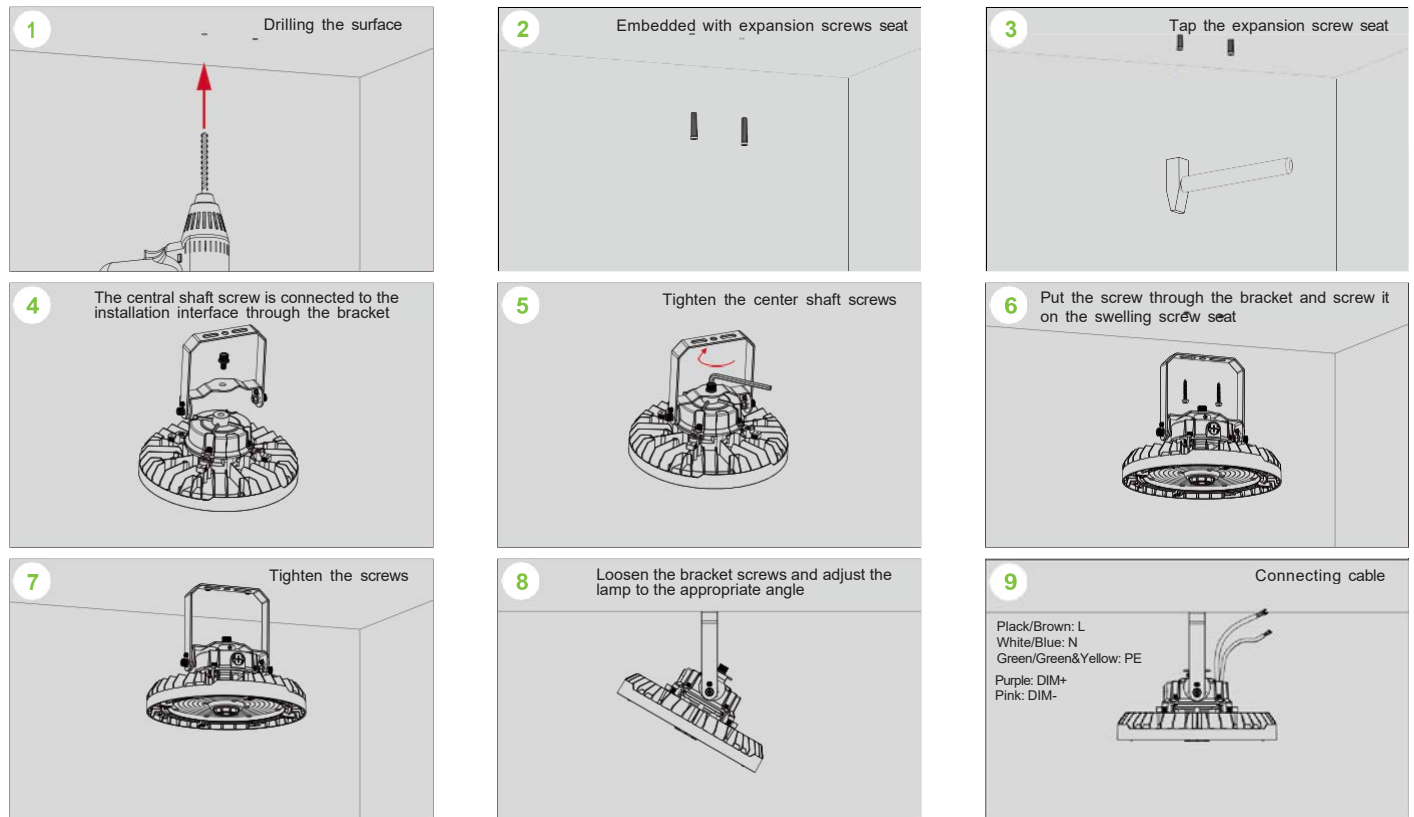
Emergency backup

Installation Instruction

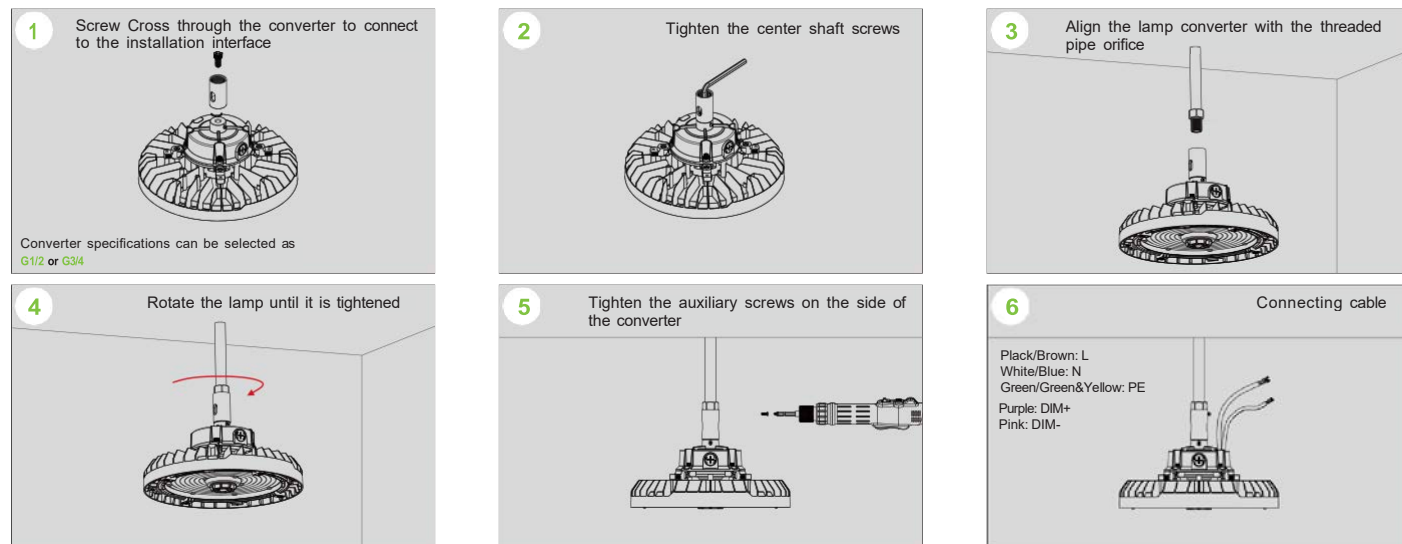
Suspension installation with rain or hook



Surface mounting with bracket



Pipe installation



Packing Information

Power	L /inch	W /inch	H /inch	QTY/ctn	G.W./lbs
150W	10.5	10.5	11.5	2	10lbs
240W	12.8	12.8	13.8	2	14lbs