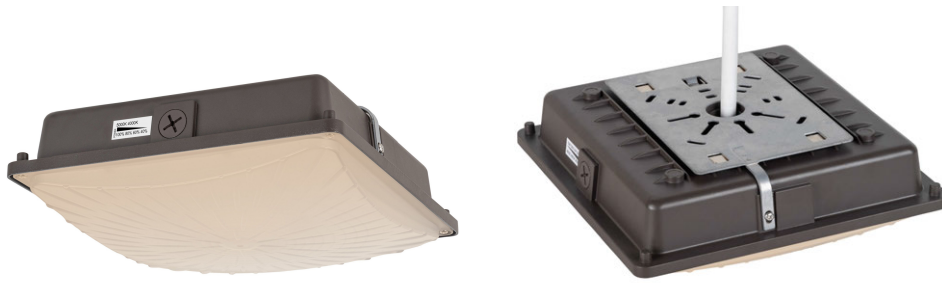


LED Slim Canopy Light

Wattages: 26W,39W,52W,65W



The LED Slim Canopy Light Series can be widely used for Indoor or Outdoor Excellent for Gas station, Hallways, Multipurpose Rooms , Underground parking,super market, store and many other applications.

WATT/CCT
SELECTABLE



Features:

- Lumileds LED, high luminous efficiency and long working life .
- High efficiency LED Driver, the wide range input voltage AC120-277V.
- Die Cast aluminium cooling design,high quality and better cooling for LED Tj < 85°C .
- Excellent Optics design, greatly improve the light utilization and evenness.
- **The 1-10V Dimming type is continuous.**
- Motion sensor Control Available (SOLD SEPARATELY).

Packaging information:

❖CP26395265W27-45K:

Carton Size:510mmX290mmX290mm
20.08”X11.42”X11.42”(4Pcs/CTN)

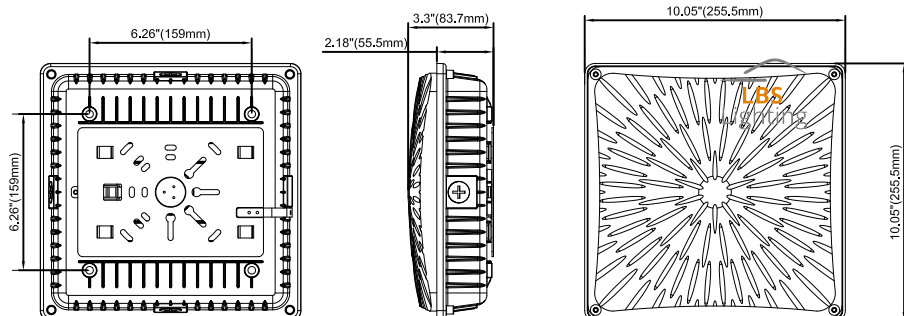
Inside the box:270mmX270mmX110mm
10.63”X10.63”X4.33”

SPECIFICATION				
TYPE	CP26395265W27-45K			
WATTAGE	26W	39W	52W	65W
LUMEN	3929 lm (26W&4000K)	5575 lm (39W&4000K)	7132 lm (52W&4000K)	8525 lm (65W&4000K)
EFFICACY	> 140 lm/W			
CCT	4000K,5000K			
CRI	> 70			
INPUT VOLTAGE	AC120-277V			
LIGHTING ANGLE	118°			
FACTORY SETTINGS	65W & 4000K			
LED TYPE	2835			
PF	> 0.95			
DRIVER EFFICIENCY	> 89%			
PROTECTION LEVEL	WET			
LIFE TIME	> 50000 hours			
WARRANTY	5 year limited			

LED Slim Canopy Light

Wattages: 26W,39W,52W,65W

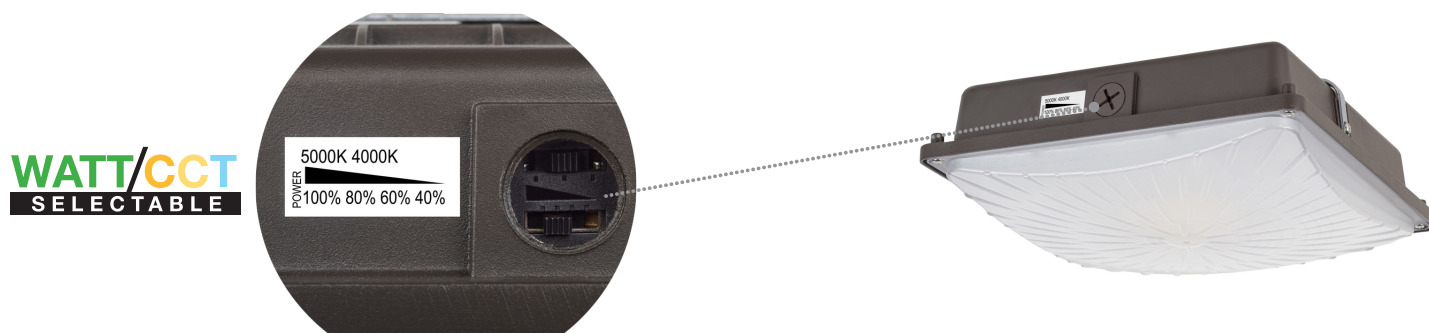
DIMENSION:



Specifications:

Shell materials: Aluminum & PC.
 Net Weight : 2.13Kg (4.70 lbs)
 Finish: Dark Bronze(Standard)
 Product Size:255.5mmX255.5mmX83.7mm
 10.05"X10.05"X3.3"

Control Module:



ORDERING INFORMATION:

EXAMPLE:

LBS-CP26395265W27-45K-Z[D,W,B,S]-E[Blank,M]

LBS	CP	26395265	27	45K	Z	E
COMPANY	PRODUCT	POWER	VOLTAGE	CCT	FINISH	CONTROL
LBS	CP Led Slim Canopy	26395265 26W/39W 52W/65W	27 AC120-277V	45K 4000K/5000K	D (Dark Bronze) W (White) B (Black) S (Silver)	M Motion Sensor + Daylight Sensing

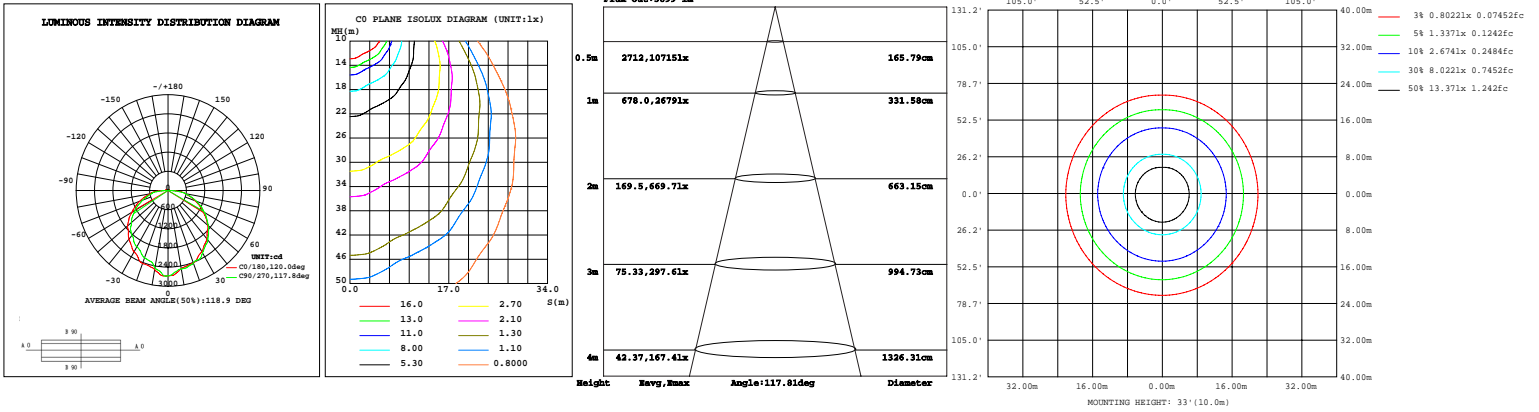
LED Slim Canopy Light

Wattages: 26W,39W,52W,65W

PHOTOMETRICS:

For complete IES files, please visit our website.

CP26395265W27-45K (65W&4000K)



CP26395265W27-45K (65W&5000K)

