



Sharkward APP User Manual

1. Introduction.....	2
1.1 Purpose.....	2
2. Registration & Login.....	2
2.1 Forgot Password.....	3
3. Create a Project.....	3
3.1 Project Management.....	3
3.2 Area Management.....	4
4. Add devices.....	5
4.1 Add a Bluetooth device (sensor).....	5
4.2 Device Location Setting.....	5
4.2.1 No Area Assigned.....	5
4.2.2 Single Device Location Setting.....	6
5. Device parameter setting.....	6
5.1 Single Sensor parameter setting.....	6
5.2 Group parameter setting.....	8
5.3 Group intelligent linkage.....	9
6. Smart Action.....	11
6.1 Schedule (timed).....	12
6.2 Automation.....	13
7. Power Consumption Statistics.....	14
7.1 Power consumption statistics device.....	14
7.2 Power consumption statistics.....	14
8. Monitor.....	15
9. Reset of Sensors.....	15
9.1 Delete and reset the lamp via APP (restore factory settings).....	15
9.2 Reset by RC100.....	16
9.3 Quick Reset buttons on device (for some devices).....	16
9.4 Deleting and resetting the fixture through multiple power-ups (restore factory settings).....	17
10. Faults and solutions.....	18



1. Introduction

1.1 Purpose

This document is intended to give assistance of using Sharkward App. It's only for internal and Sharkward's customers use only.

2. Registration & Login

Please scan and download the app according to the smartphone model



iOS and Android

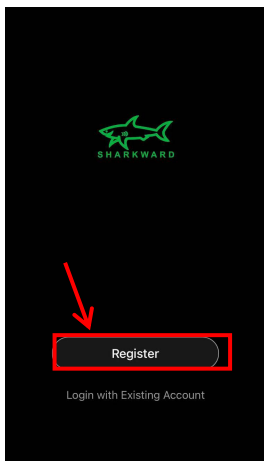


Google Play

* The Android version APP supports most Android smartphones in the market. Some phone models may not be supported due to phone hardware or firmware reasons.

Click "Register" to create an account with your mobile number or email address. We'll send a verification code to you.

Note: Please contact Sharkward (info@sharkward.com) and tell Sharkward how many pieces Bluetooth sensors you bought.



Register

China +86

Enterprise Name

Mobile Number/Email

Get Verification Code

I Agree [User Agreement](#) and [Privacy Policy](#)

Enter Verification Code

Verification code has been sent to your mobile phone: 86-18058213695 Resend (59s)

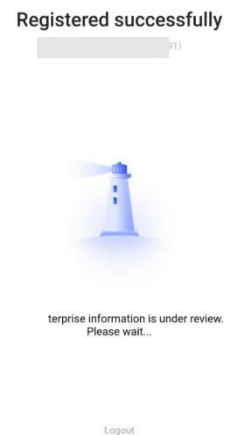
Didn't get a code?

1	2 ABC	3 DEF
4 GHI	5 JKL	6 MNO
7 PQRS	8 TUV	9 WXYZ
	0	<

Set Password

Use 6-20 characters with a mix of letters and numbers

Done

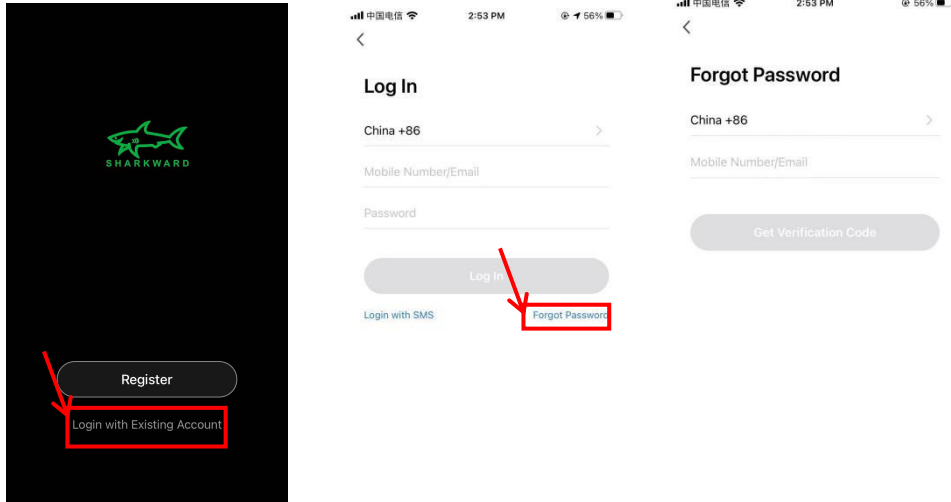




2.1 Forgot Password

If you already have an account, but you forget the password,

1. Click“ Login with Existing Account”
2. Click “Forgot Password” on the bottom right corner.
3. Input your phone number, click “Get Verification Code”



3. Create a Project

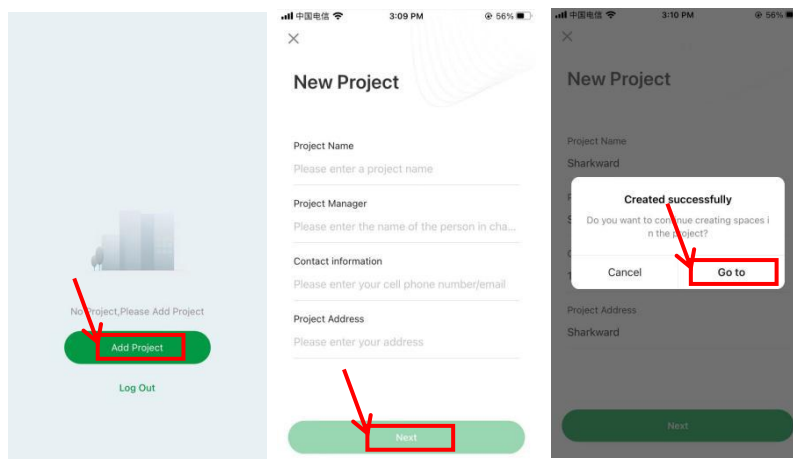
After login, click “Add Project to create a project based on your requirements.

3.1 Project Management

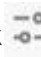
Enter the following information to create a project:

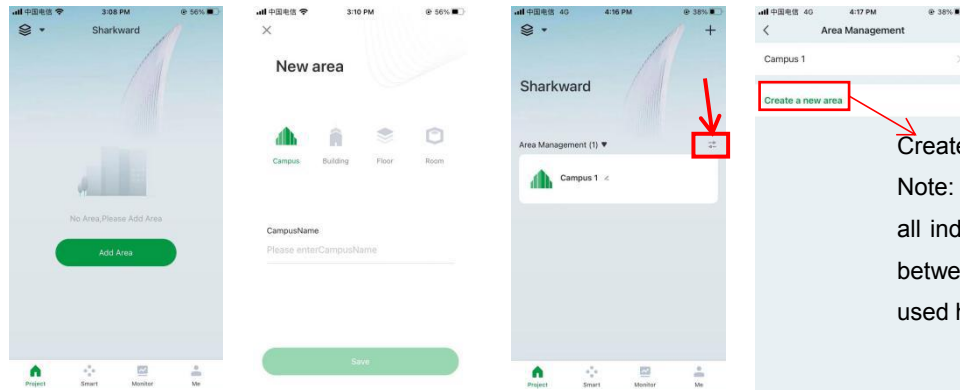
1. Project Name
2. Project Manager
3. Contact Information
4. Address

After filling in all information, click “Next” to complete the project creation. You can also click "Go" to create a space in the project



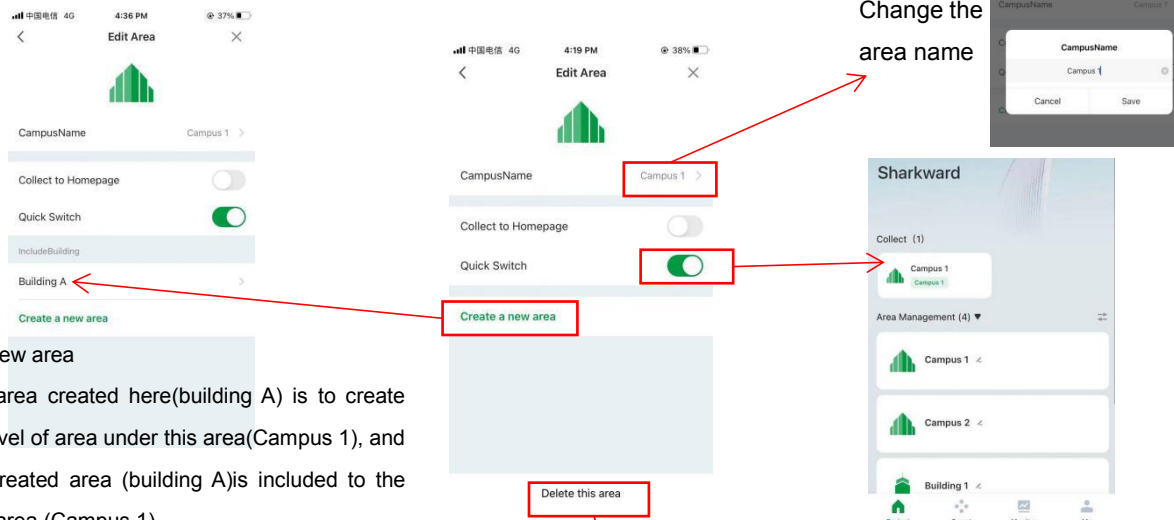
3.2 Area Management

1. Based on your requirements, Choose the suitable area. Four choices: Campus, Building, Floor and Room.
2. Enter the Name, then click “save”
3. You can also add new area by click 



Create a new area
 Note: The new areas created here are all independent, there is no connection between these areas, so it is generally used here to add the largest space.

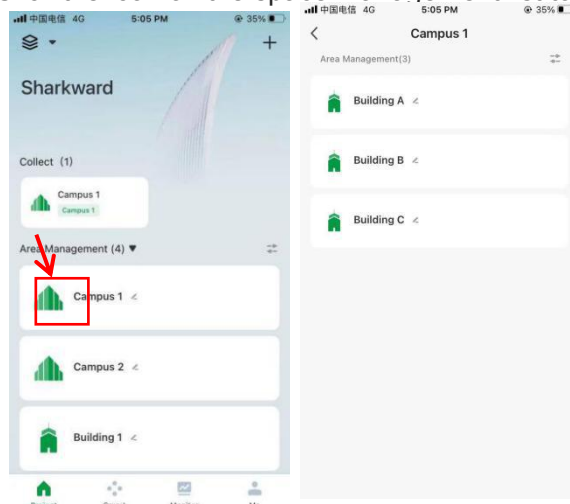
Click  enter the edit state of the space



Create a new area
 The new area created here(building A) is to create the next level of area under this area(Campus 1), and the new created area (building A)is included to the existence area (Campus 1).

If you don't want this area any more, Click “delete this area”

Click the icon on the space management list to view the subordinate space of the space

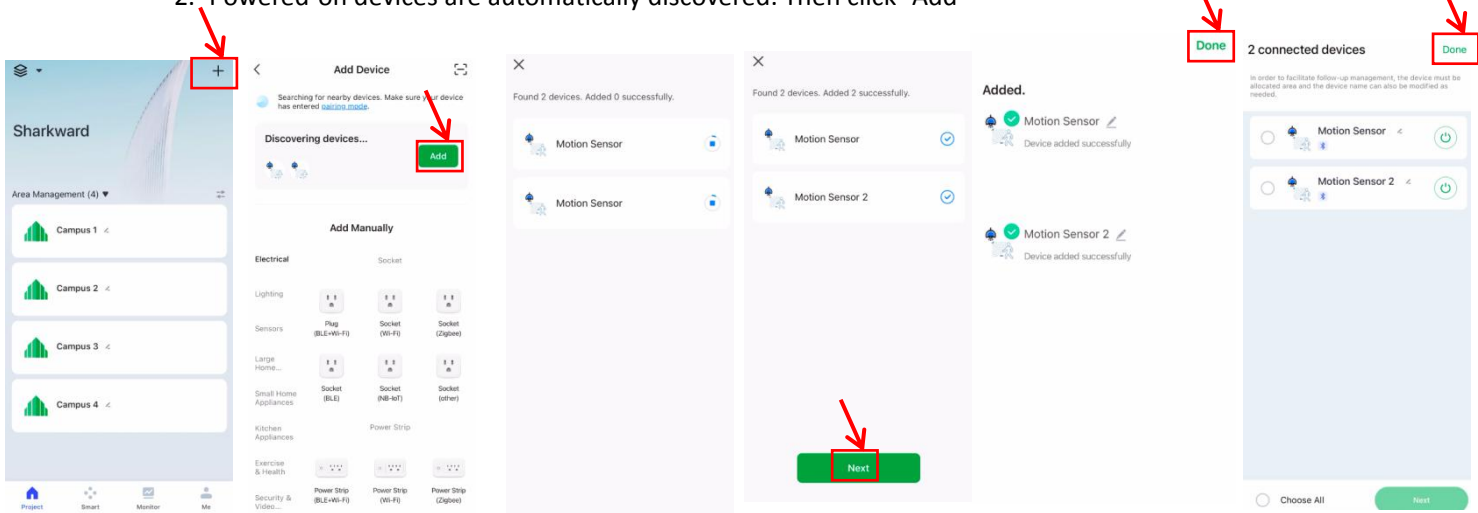




4. Add devices

4.1 Add a Bluetooth device (sensor)

1. In the upper right corner of the homepage, click "+"
2. Powered-on devices are automatically discovered. Then click "Add"

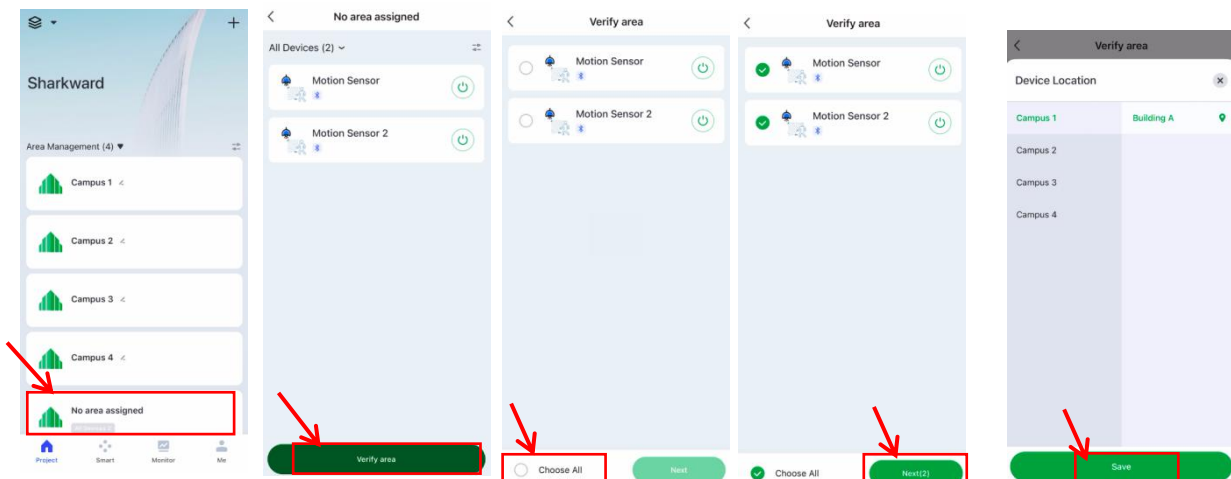


4.2 Device Location Setting

4.2.1 No Area Assigned

After pairing, your devices will be automatically assigned to the group--No Area Assigned, where you can set the area later. After pairing, your devices will be automatically assigned to the group, No Area Assigned, where you can set the area later.

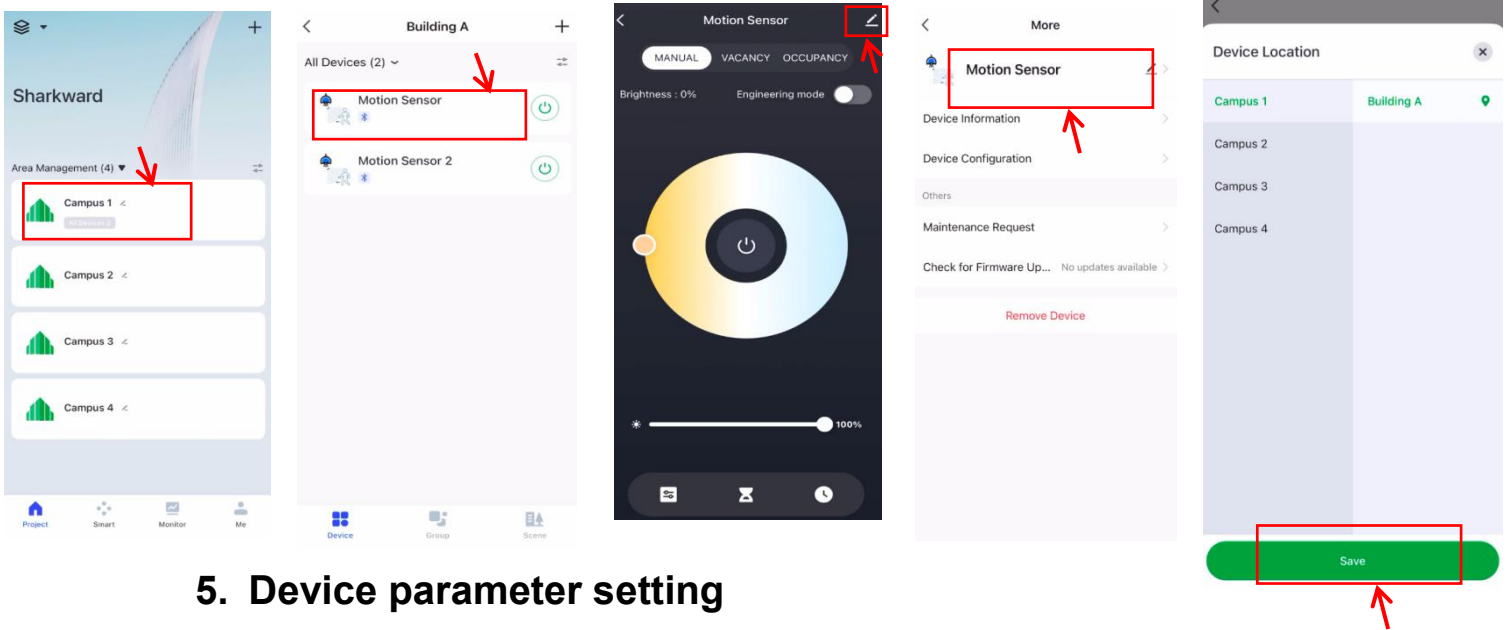
1. Select a device, and click verify Area
2. Select an area for your device
3. After setting completed, the device will be moved to the corresponding area.





4.2.2 Single Device Location Setting

Click Location in device details page to assign an area to a single device.

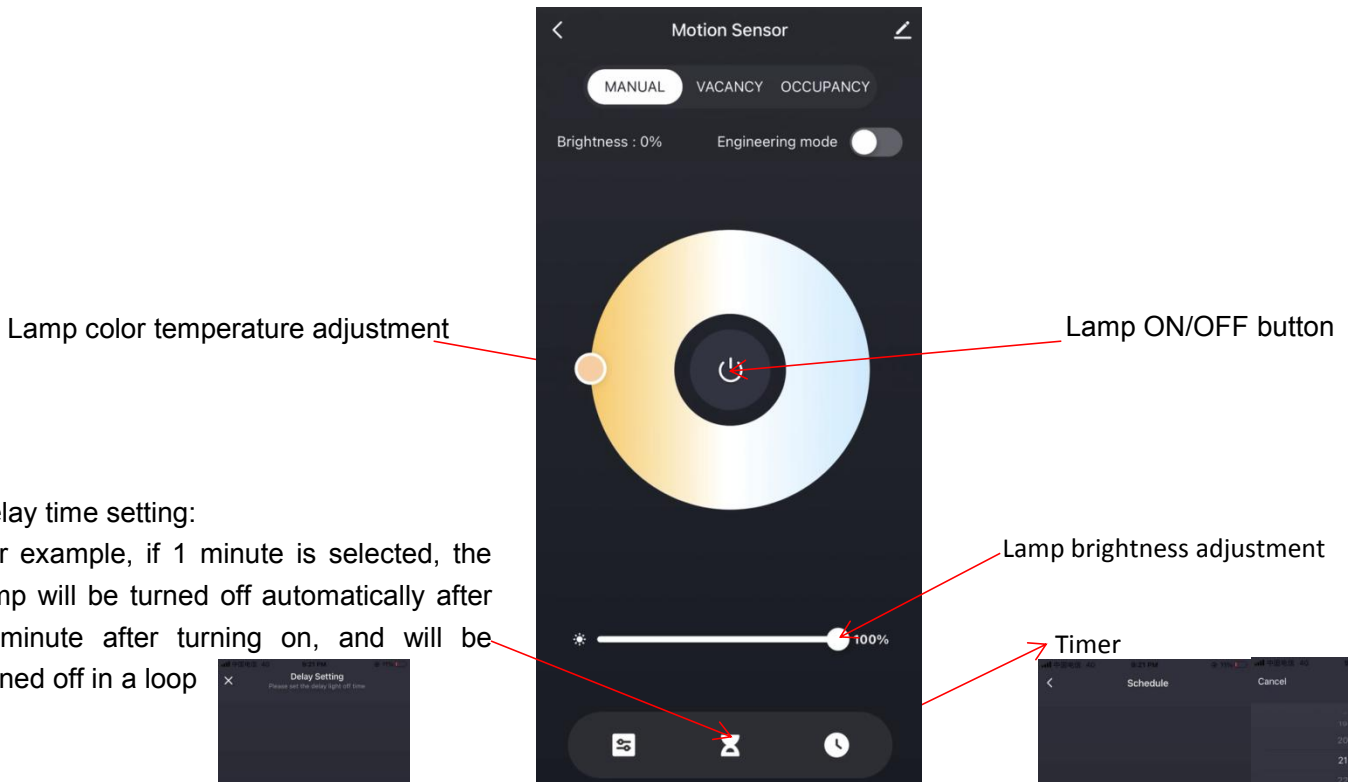


5. Device parameter setting

5.1 Single Sensor parameter setting

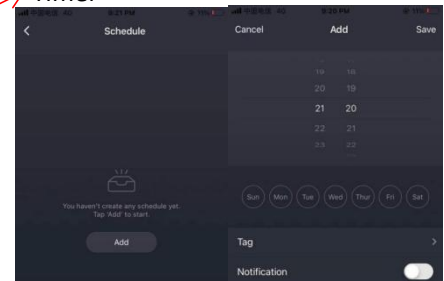
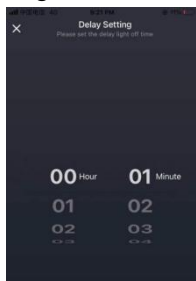
Click to enter the sensor setting interface. Set the required parameters.

A. Manual mode: The product has no induction function and can only be controlled by APP or wireless remote control. Lamp ON/OFF--Lamp brightness adjustment--Lamp color temperature adjustment



Delay time setting:

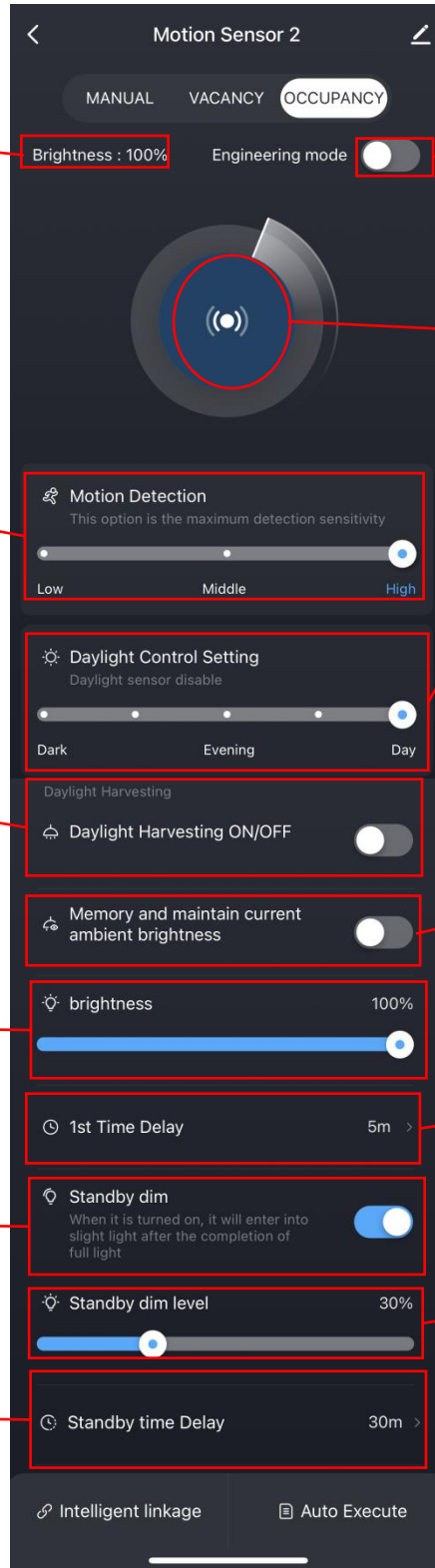
For example, if 1 minute is selected, the lamp will be turned off automatically after 1 minute after turning on, and will be turned off in a loop





NINGBO SHARKWARD ELECTRONICS CO.,LTD.

B.Occupancy Sensor settings: auto-sensing mode, lamps will open and close automatically;



Real-time brightness display of lamps

Sensitivity adjustment:
Adjustable detection range of the sensor,3 gears available
High, Middle, Low

Daylight harvesting ON/OFF button:
Turn on or turn off the daylight harvesting Function.
If this function is turned on, when the ambient brightness changes, the sensor will adjust the brightness of the lamps, so that the lux value of the entire environment is maintained at the lux level you set.

Brightness:
The brightness maintained by the lamp during the 1st Time Delay(hold time)

Standby Dim ON/OFF button:
If we turn off it, the lamp will be off after the 1st time delay without motion detected.

Standby time Delay: Standby-time
Or Time to maintain dim brightness

Engineering mode button: debugging button
After Engineering mode is turned on, after sending the parameters, the lamp will turn on and off once as a signal of successful parameter setting.

If this mode is not turned on, the parameters can also be set, but the lamps connected to the sensor have no response. Therefore, when setting parameters,better turn on this mode.

Sensing function on and off button

Daylight control setting:
Set the built-in daylight value of the sensor.
When the set lux value is reached, the daylight control will be triggered. If motion is detected again, the lamp will light up.

Night: the daylight control only be triggered at night
Evening: the daylight control only be triggered at evening.
During the day: the daylight is disabled.

With one Click, the sensor will memory and maintain current ambient brightness,

Full Brightness Duration or Hold time

Standby Dim: Dimming level

Note: When motion is detected, both the 1st time delay and standby time delay are refreshed

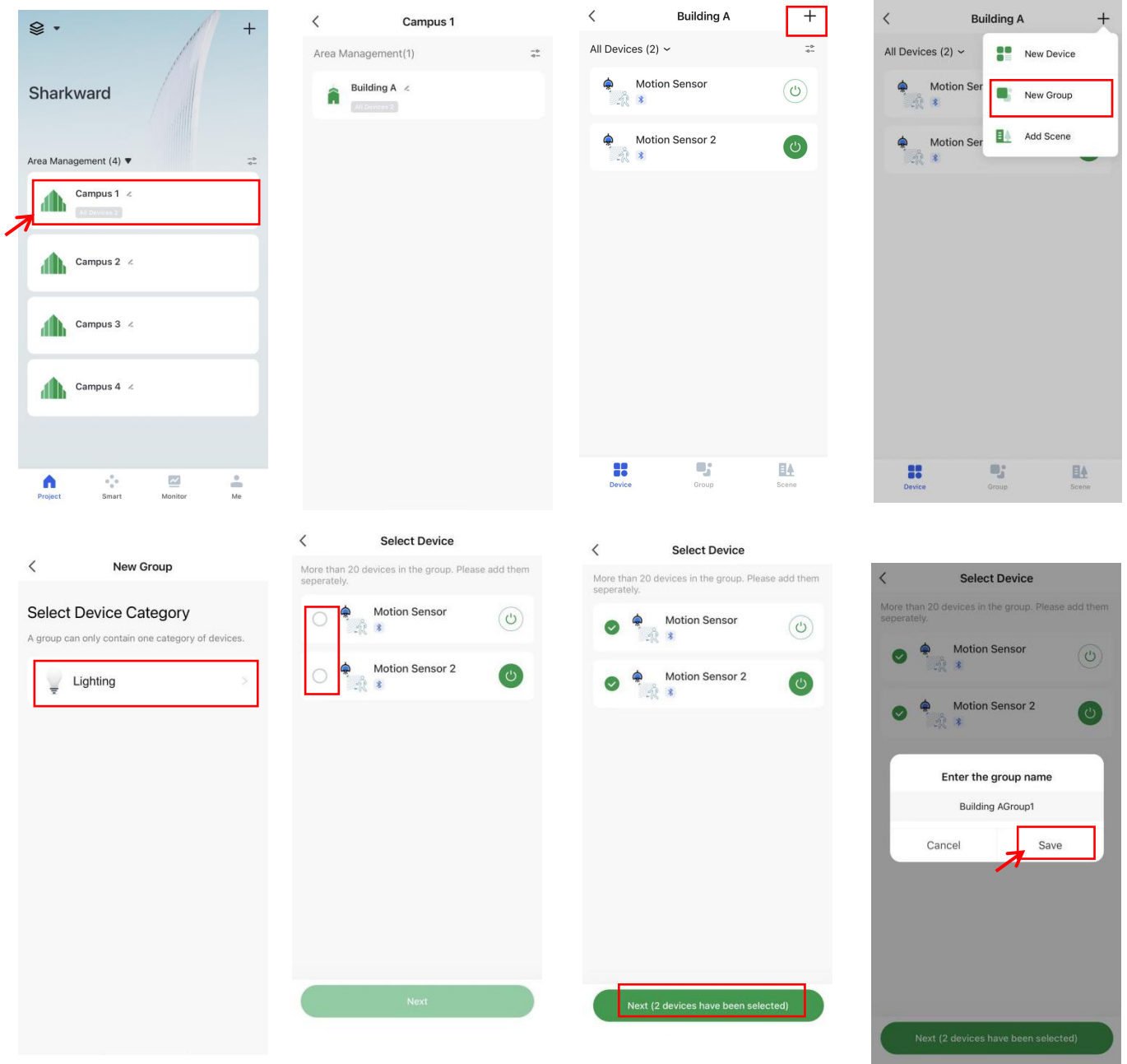


NINGBO SHARKWARD ELECTRONICS CO.,LTD.

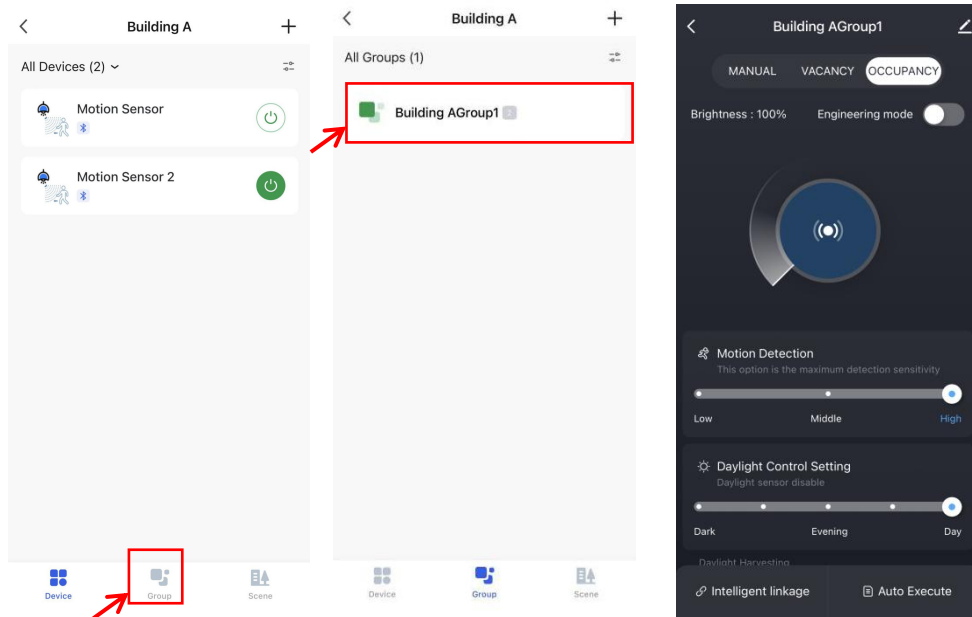
C. Vacancy sensor setting: Same as Occupancy sensing mode; the difference is that vacancy sensing mode will not start automatically, it must be activated through the wireless remote control or APP, and it will automatically shut down according to the motion signal after activation.

5.2 Group parameter setting

Find the device interface in the Area management, click "+" to add a group, and add related devices.



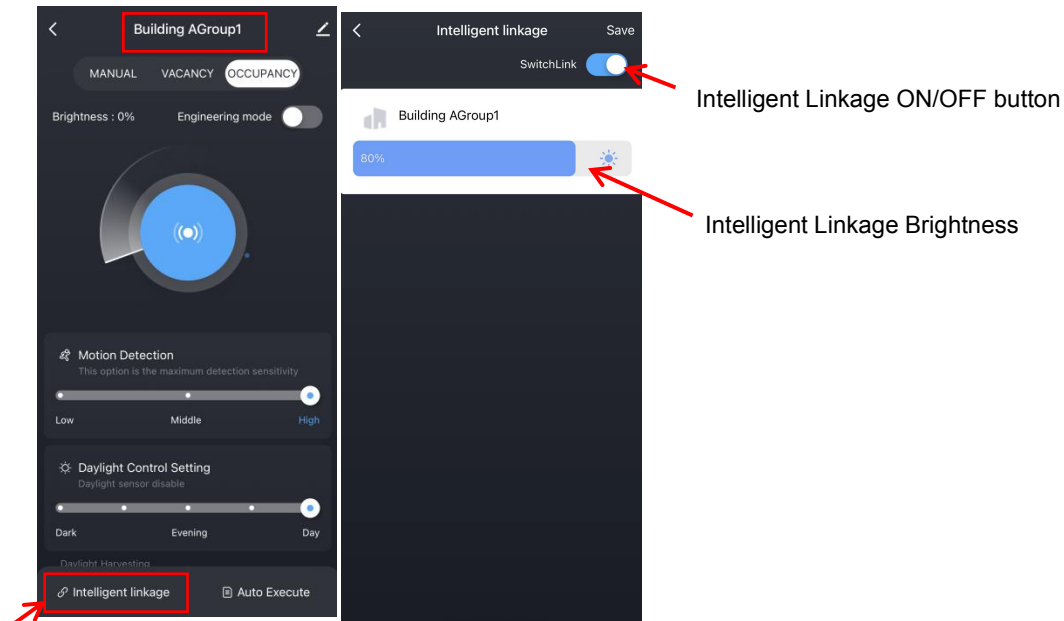
In the group interface, click the group to enter the group parameter setting interface



5.3 Group intelligent linkage

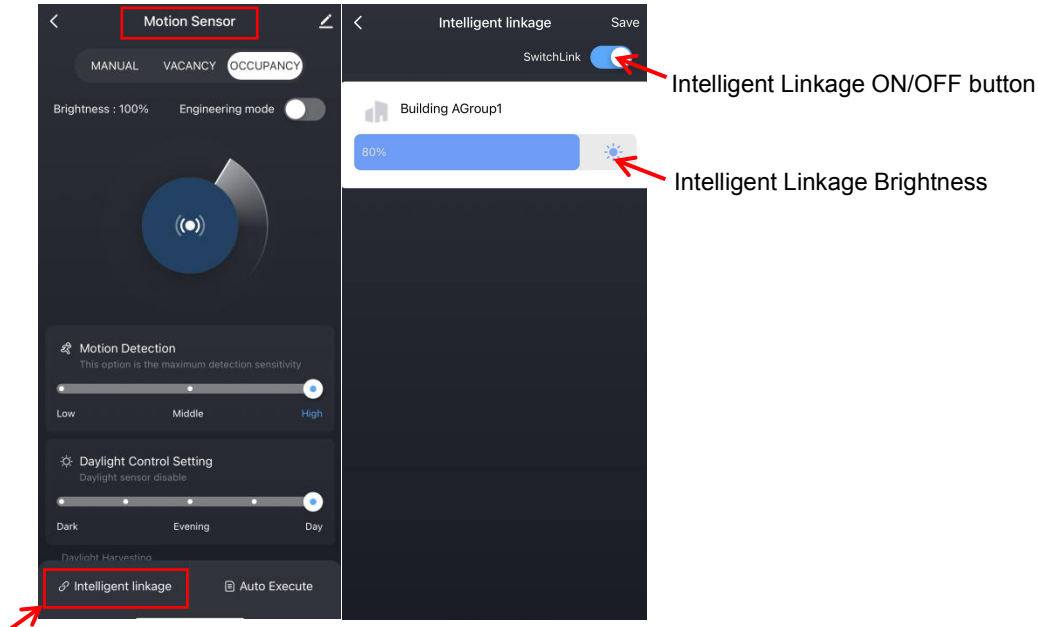
In the group parameter interface, find "Intelligent Linkage" and click it to enter the setting interface

1. Click "Switch Link" button to turn on the intelligent linkage function of all devices in the group
2. Linkage brightness adjustment: Drag the brightness bar to adjust the brightness of all devices in the group



In single sensor parameter setting interface, there's also a "Intelligent Linkage" button. The setting interface is the same as that of the group, It also has "switch link" and "linkage brightness".

If the "Switch Link" of the group is turned on, the Intelligent linkage of the the devices in the group are all turned on, but the linkage function of a single product can be turned off in the single device interface.

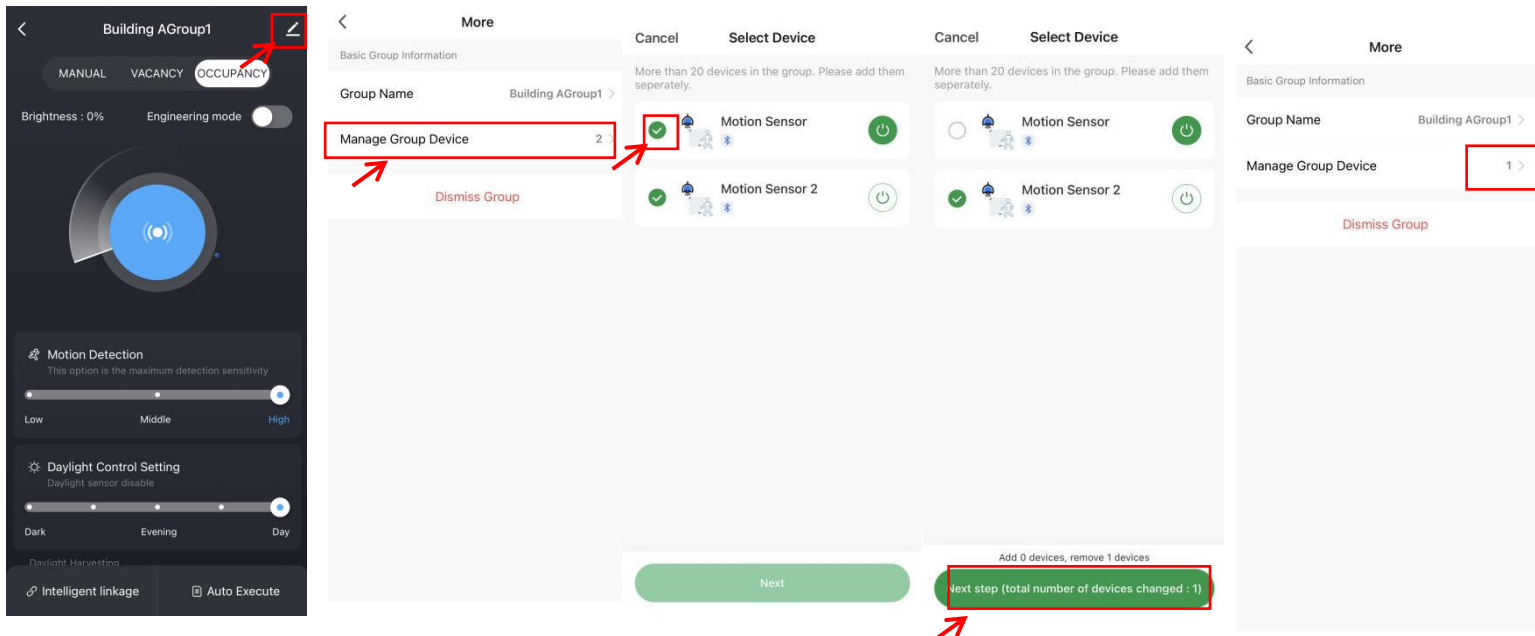


Note:

If the group cannot control the device after the device is added to the group, we need to remove the device from the group and then add it again.

How To remove a device from a group?

On the group parameter setting interface, click the upper right corner to enter the "More" interface, then click "Manage Group Device", enter "Select Device", uncheck the device, and then click "Next", you can delete successfully.

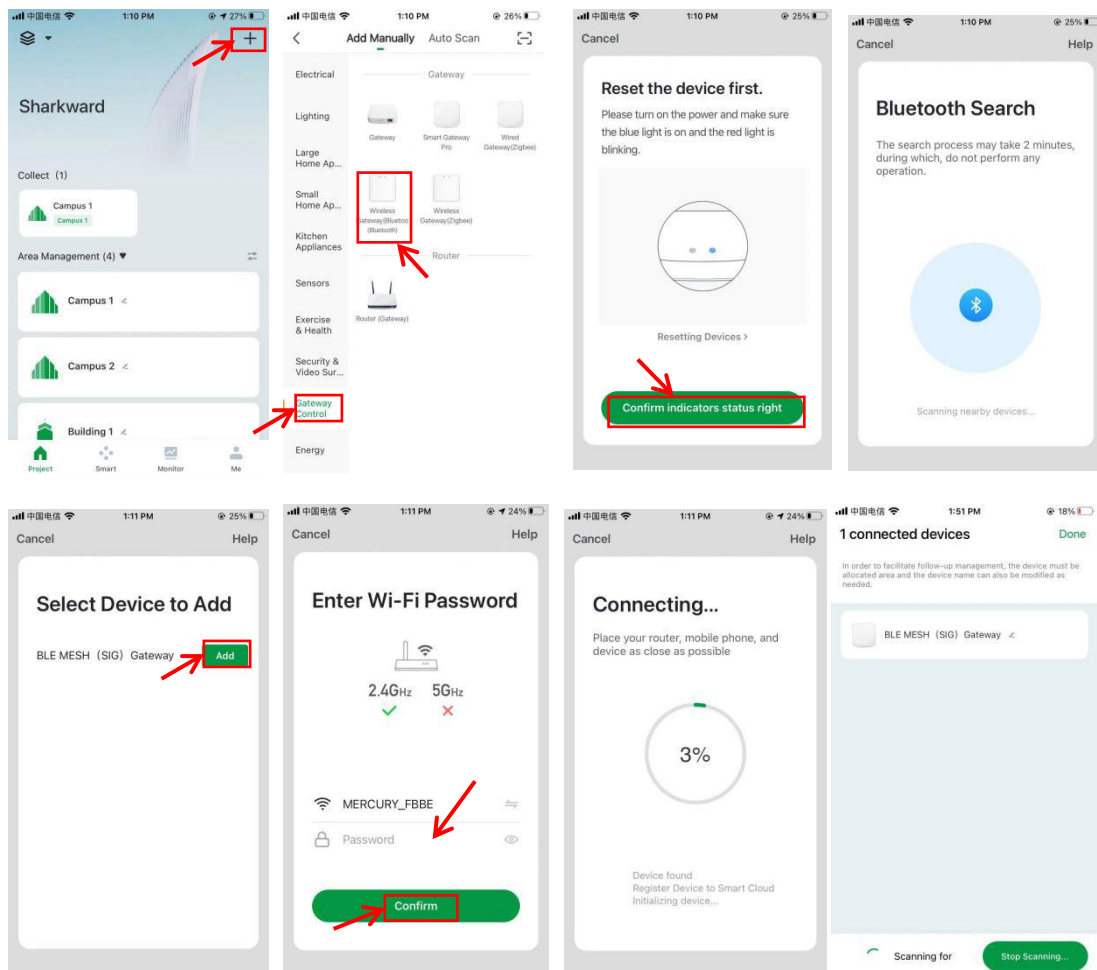


6. Smart Action

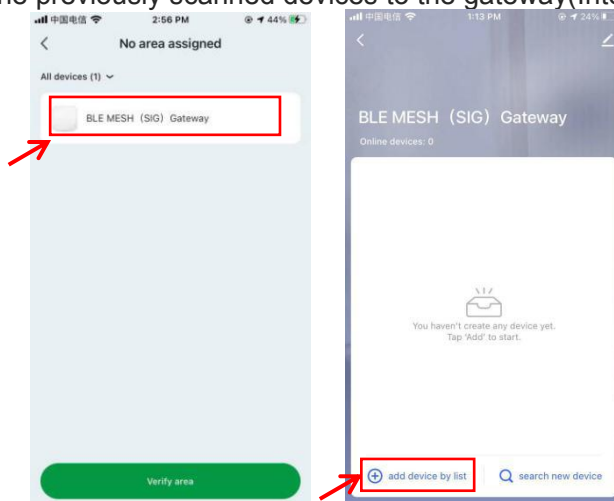
We must add a gateway before using Smart Action function

Add a gateway

1. In the upper right corner of the homepage, click "+", then find "Gateway Control", choose "Wireless Gateway(Bluetooth)".
2. Long press the reset button on the gateway to make sure the blue light is on and the red light is blinking. Then select and add Wireless Gateway with Wi-Fi password.



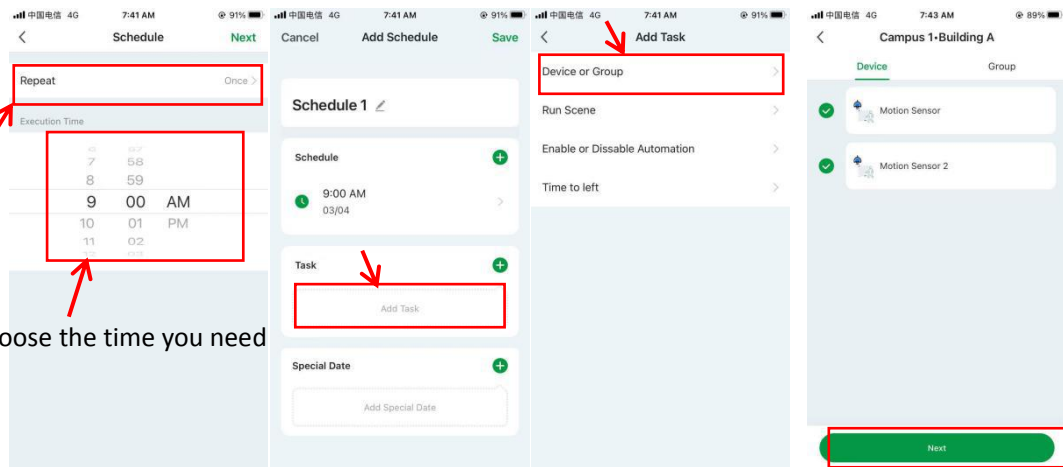
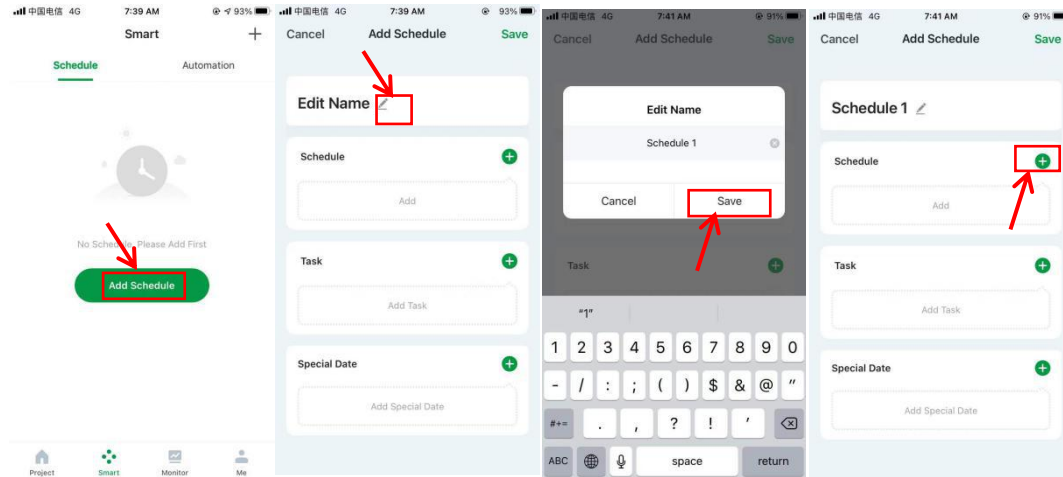
Find the gateway, enter the gateway interface, then click "Add device by List" to connect the previously scanned devices to the gateway(Internet)



6.1 Schedule (timed)

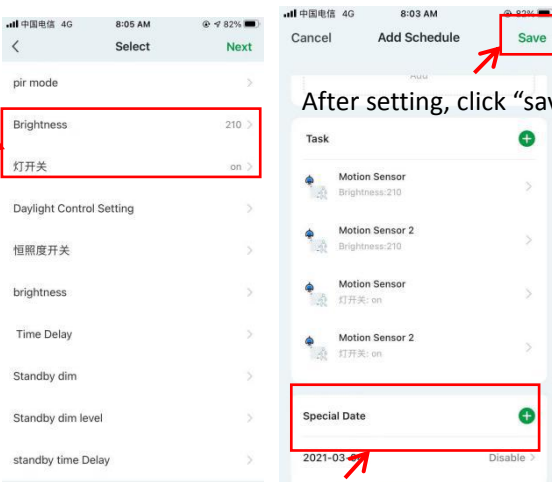
Timed: according to the set time you choose, execute the corresponding execution task
 Select the time you need, set the repeat time according to the week to execute the target
 You can select the "device type" or "single device" as execution objects by space, and set the corresponding execution tasks.

During task execution, multiple groups of execution objects can be set

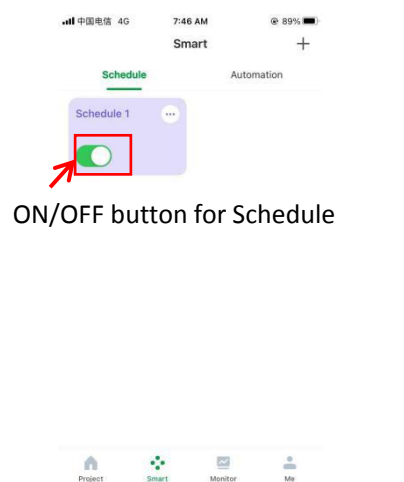


Choose the time you need

Choose the parameters you need



After setting, click "save"



ON/OFF button for Schedule

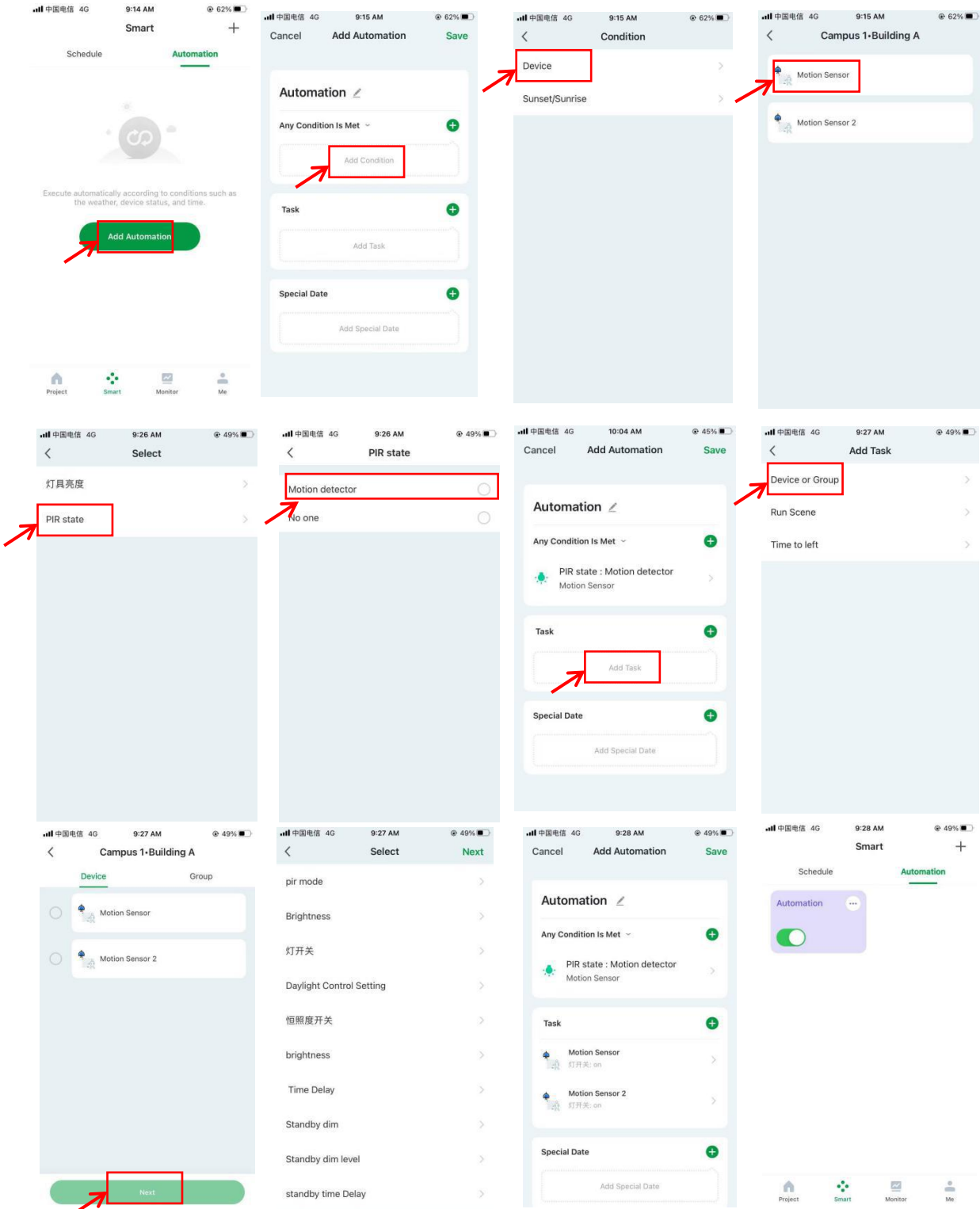
You can enable or unable an schedule on specific date you set

6.2 Automation

Automation is to trigger the actions automatically if all required conditions are met.

A. Conditions: set the device status as the trigger condition. You can set multiple conditions for device actions to be triggered either if all conditions are met or if one of the conditions is met.

B. Task: also called action. You can choose how the devices, group, scene need to do after the conditions is triggered.

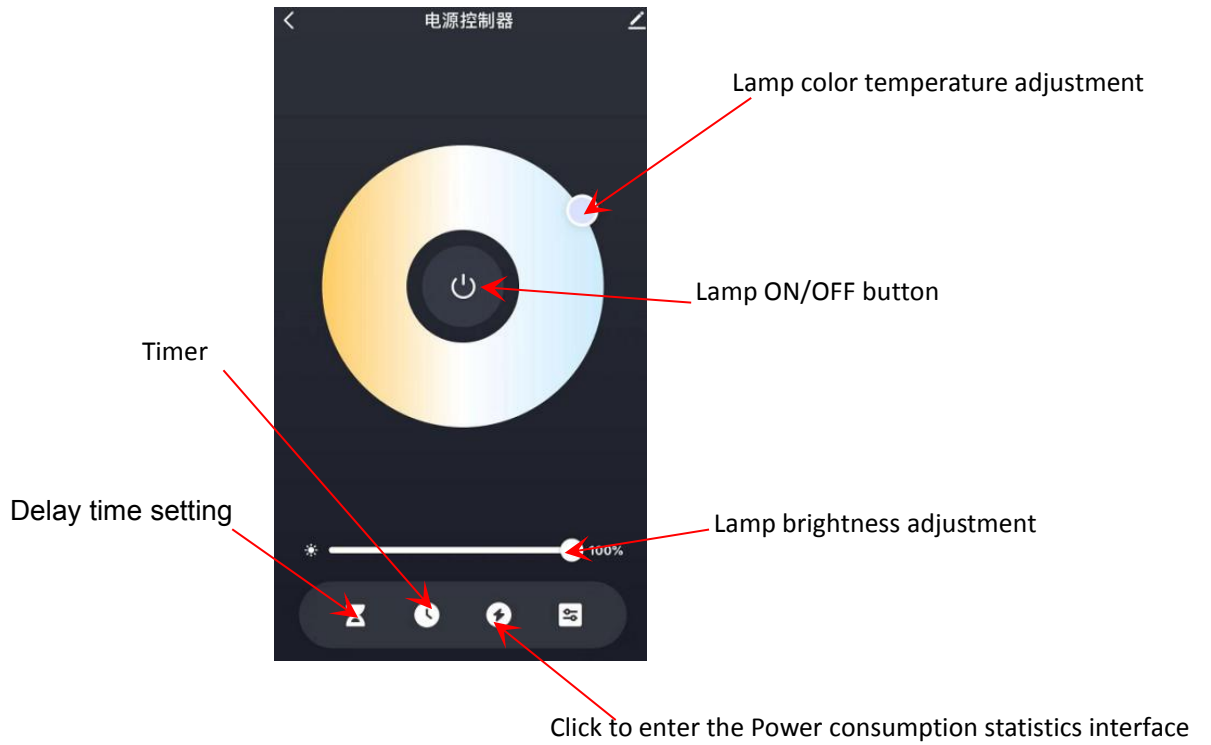


Note: You can choose the parameters you need, the pictures are just examples

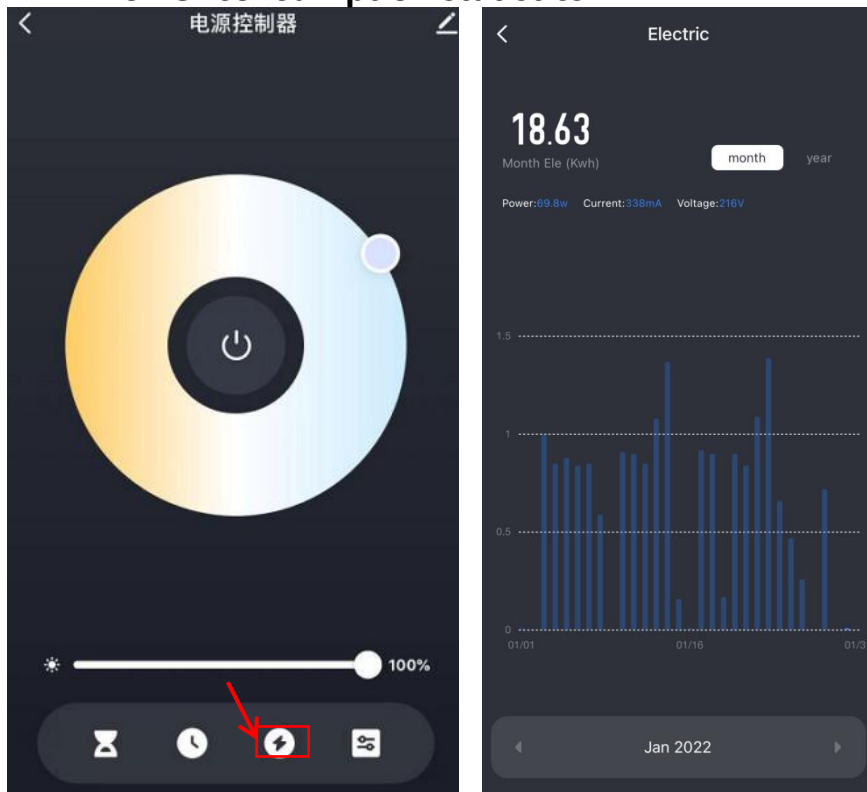


7. Power Consumption Statistics

7.1 Power consumption statistics device

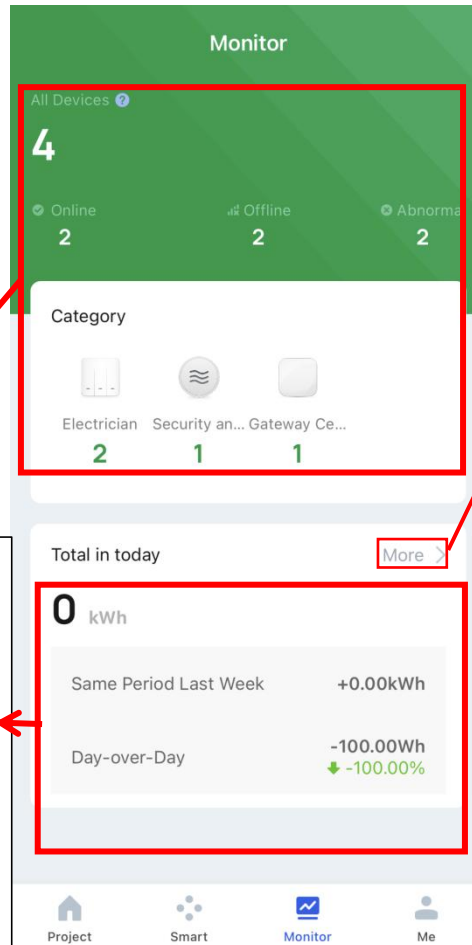


7.2 Power consumption statistics





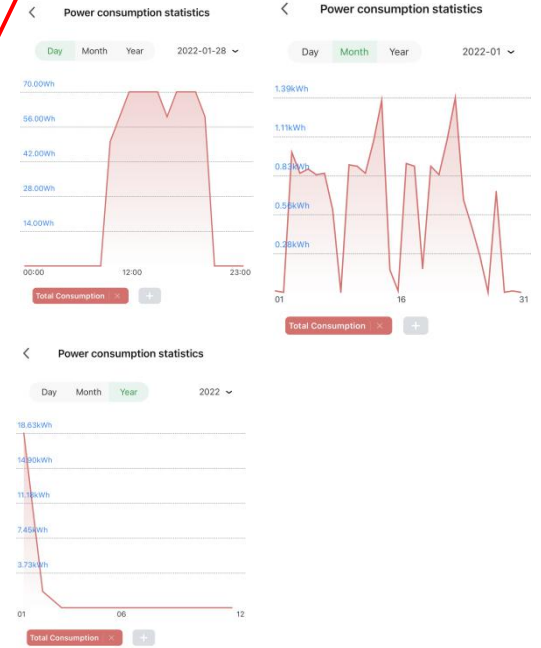
8. Monitor



This part will show the number of connected devices, device status, and device type

Click "more" to view monthly, yearly, daily energy consumption graphs

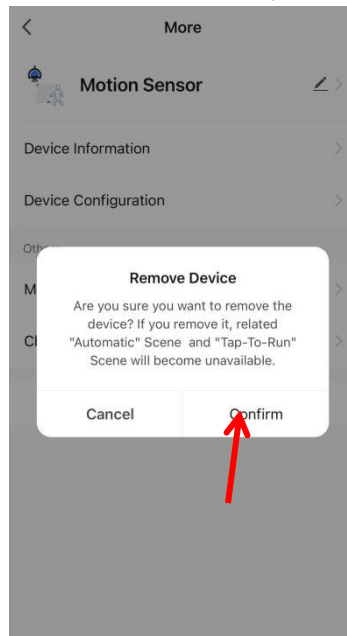
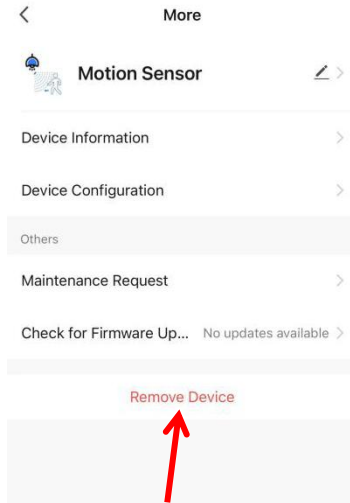
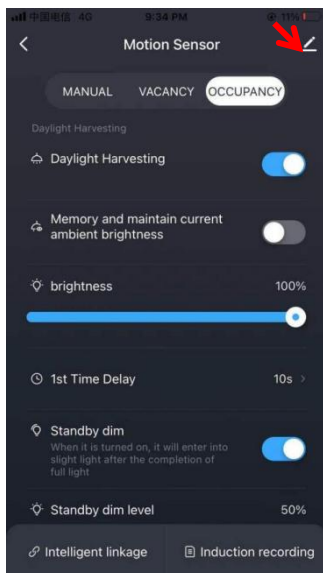
Energy consumption
Note: the data of device energy is collected from the devices available for energy consumption tracking.
If your project does not have any devices with consumption date, there will be no energy consumption data under this project



9. Reset of Sensors

9.1 Delete and reset the lamp via APP (restore factory settings)

Enter the device details, click "Remove Device" to delete the device and restore factory settings





NINGBO SHARKWARD ELECTRONICS CO.,LTD.

9.2 Reset by RC100

First: Press “RESET” button

Second, Press “ON/OFF” button

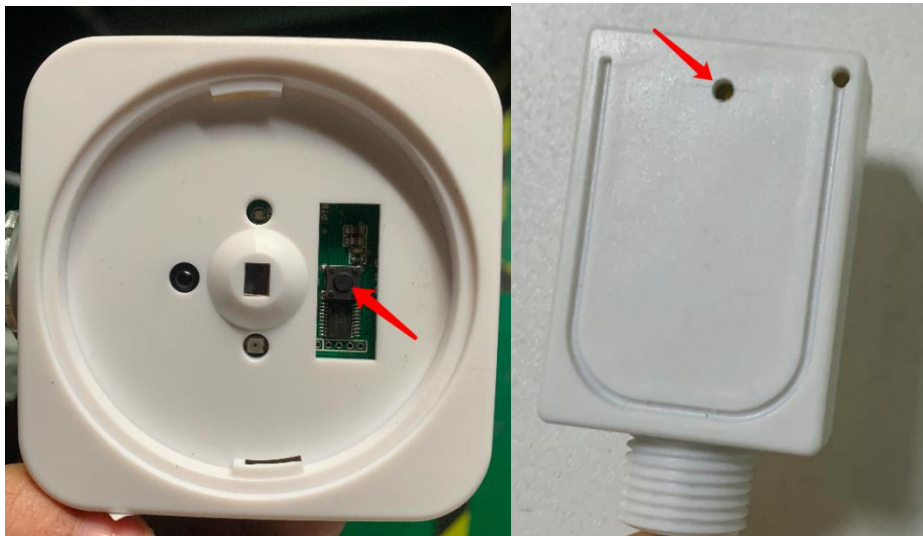
The sensor's red and green indicator blinks alternately, indicating that the reset is successful



9.3 Quick Reset buttons on device (for some devices)

Press and hold down the reset button for around 5 seconds until the indicator on the device blinks. The reset is successful.

BRI819P-B-D-BLE and BRI-PP01 currently support this reset way.

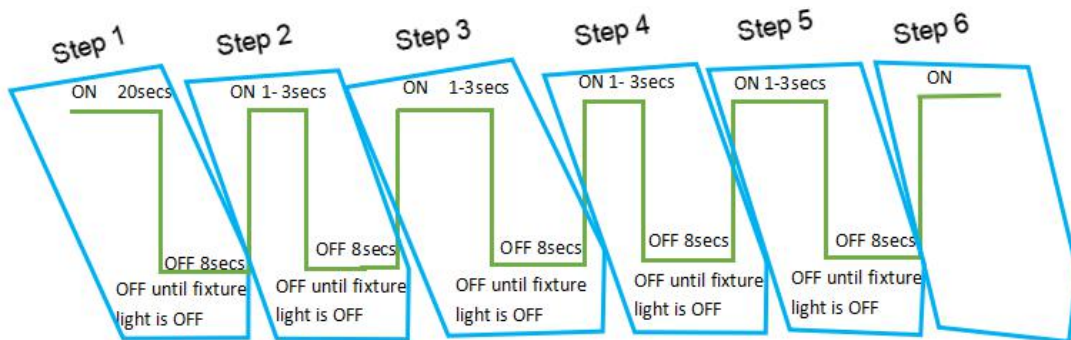




9.4 Deleting and resetting the fixture through multiple power-ups (restore factory settings)

The operation steps are as follows:

1. Preparation: the fixture is powered on for the first time, the light is on, wait for 20 seconds, power off, wait about 8 seconds
2. Power on for the second time, the light will be on for 1-3 seconds, power off, wait for about 8 seconds
3. Power on for the third time, the light is on, wait for 1-3 seconds, power off, wait about 8 seconds
4. Power on for the fourth time, the light will be on for 1-3 seconds, power off, wait for about 8 seconds
5. Power on for the fifth time, the light is on, wait for 1-3 seconds, power off, wait for about 8 seconds
6. When the power is turned on for the sixth time, the light is on and the light flashes, indicating that the factory default settings are restored successfully. And the data on the fixture will be cleared.





10. Faults and solutions

Faults	Reason	Solution
Cannot download Sharkward APP	We have not listed the store that comes with mobile phones or scan the wrong code	Please scan and download the app according to the smartphone model
When registering an account, it shows that the account already exists, and when logging in, it shows an account error	Unknown	Change another number or email to register again
Can't log in after registration	Did not contact sharkward for permission	Contact " info@sharkward.com " and tell us how many pcs devices you bought
Unable to add devices	The device has already been added by someone else	reset the device, add it again
After joining a group, the group cannot control the device	Unknown	First remove the device and change the group, then add it again