



*Because Lighting Speaks Volumes*

# V2758-5

Black "X" Connector for Volume Lighting 120V 2-Circuit/1-Neutral Track Systems

Catalog #:

Type:

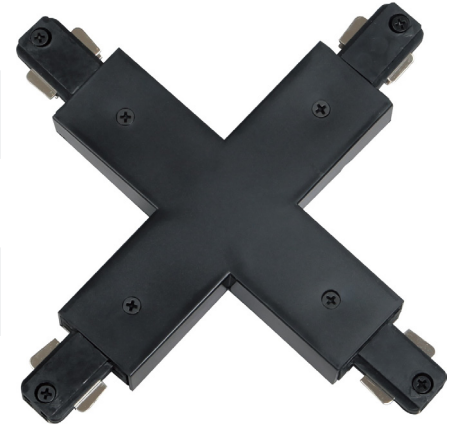
Project:

Prepared By:

## Description

This black "X" connector is compatible with Volume Lighting 120V 2-circuit/1-neutral track systems V2762-5 (2 ft. track section), V2764-5 (4 ft. track section), V2766-5 (6 ft. track section), and V2768-5 (8 ft. track section). Suitable for dry locations only. Finished in solid black.

Accessory 1 (Sold Separately)	V2762-5 2 ft. Black 120V 2-Circuit / 1-Neutral Track System / Section / Rail
Accessory 2 (Sold Separately)	V2764-5 4 ft. Black 120V 2-Circuit / 1-Neutral Track System / Section / Rail
Accessory 3 (Sold Separately)	V2766-5 6 ft. Black 120V 2-Circuit / 1-Neutral Track System / Section / Rail
Accessory 4 (Sold Separately)	V2768-5 8 ft. Black 120V 2-Circuit / 1-Neutral Track System / Section / Rail



## Specifications

Type of Lighting	Indoor Track Connectors
Product Type	"X" Connector
Height (in.)	0.625
Width (in.)	7.0625
Length or Extension/Projection (in.)	7.0625
Finish	Black
Main Material	Steel Backing and Polymer/Plastic Decorative Parts
Installation Location	Dry
Compliances	RoHS Compliant
Safety Ratings	cULus Listed
Assembly	No Assembly Required

## At a Glance

- Sturdy, Exquisite Construction
- Solid Black Finish
- Compatible with Volume Lighting 120V 2-Circuit/1-Neutral Track Systems V2762-5 (2 ft. Track Section), V2764-5 (4 ft. Track Section), V2766-5 (6 ft. Track Section), and V2768-5 (8 ft. Track Section)
- Suitable for Dry Locations Only
- Individually Inspected for Quality Assurance
- cULus Listed for Safety