



Because Lighting Speaks Volumes

# V7052-33

1-Light Integrated LED Indoor Brushed Nickel Mini Convertible Disc / Circle Flush Mount Ceiling Fixture, Wall Mount, or Wall Sconce with White Acrylic Circle Lens

Catalog #:

Type:

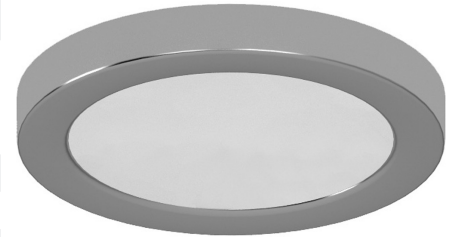
Project:

Prepared By:

## Description

This integrated LED indoor brushed nickel mini convertible disc / circle flush mount ceiling fixture, wall mount, or wall sconce features a white acrylic circle lens. Go green and save big. Energy-efficient LED is environmentally friendly and requires substantially less electricity to maintain, passing down cost-cutting savings to you. Enjoy this piece's sleek, modern design. Profile is super thin—only 1 in. in height. Compact light fits easily in small spaces. When wall-mounted, this fixture is Americans with Disabilities Act compliant / ADA compliant. Perfect complement to stainless-steel appliances, kitchens, bedrooms, living rooms, hallways, restaurants, and many other indoor areas. Suitable for dry locations only. Beautifully finished with flawless nickel brushed to perfect symmetry by skilled craftsmen. Feel at ease with brushed nickel's lasting quality and stunning appearance. High-quality nickel provides phenomenal durability and an attractive gleam. Hard surface provides top quality protection against scratches. Easy maintenance—simply clean and polish to achieve an even more lustrous shine. Outer lacquer finish provides an attractive sheen and additional layer of protection. Feel confident in a quality product. Integrated LED comes with a 5-year limited warranty.

Other Material	White Acrylic Circle Lens
Light Direction	Down (Ceiling-Mounted) or Outward (Wall-Mounted)
Mounting Deck Height (in.)	8
Mounting Deck Width (in.)	8
Mounting Deck Shape	Circle
Installation Location	Dry
Light #	1
Watts per Light (W)	14
Total Wattage (W)	14
Light Source Included?	Yes (Integrated LED)
Light Bulb(s) Included?	N/A (Integrated LED Light Source Included)
CRI	90
Color Temperature (K)	3000
Lumens per Light	850
Total Lumens	850
Life Rated (Hours)	50,000
Dimmable?	Yes (TRIAC/ELV, 10% [120V Only])
Base	N/A (Integrated LED)
Voltage (Volts)	120V
Compliances	Americans with Disabilities Compliant (ADA Compliant) (When Wall-Mounted Only)
Safety Ratings	UL Listed
Assembly	No Assembly Required
Integrated LED Warranty	5-Year Limited Warranty



## Specifications

Style	Modern
Type of Lighting	Indoor Ceiling Lighting or Wall Lighting
Product Type	Ceiling Fixture or Wall Mount
Product Subtype	Mini, Flush Mount, Convertible (Ceiling or Wall Mount), Sconce (When Wall-Mounted)
Height (in.)	1
Width (in.)	8
Length or Extension/Projection (in.)	8
Finish	Brushed Nickel
Main Material	Steel

## At a Glance

- Sturdy, Exquisite Construction
- 5-Year Limited Warranty on Integrated LED (Included with Purchase)
- White Acrylic Circle Lens
- Perfect Complement to Stainless-Steel Appliances, Kitchens, Bedrooms, Living Rooms, Hallways, Restaurants, and Many Other Indoor Areas
- High-Quality, Stunning Brushed Nickel—Extreme Durability and Top Quality Protection Against Scratches
- Outer Lacquer Finish Provides Attractive Sheen and Additional Protection Layer
- Modern Design
- Go Green—Environmentally Friendly, Energy-Efficient Integrated LED
- Convertible Fixture Can Install as a Ceiling Fixture Flush Mount or Wall Mount Sconce
- Americans with Disabilities Act Compliant (ADA Compliant) (When Wall-Mounted Only)
- Thin Profile: 1 in. Height
- Compact Light Fits Easily in Small Spaces
- 850 Lumens
- 3000K Color Temperature
- 90 CRI
- Dimmable (TRIAC/ELV, 10% [120V Only])
- Suitable for Dry Locations Only
- Heat-Resistant Components Withstand Up to 14 Watts
- 1-Light Fixture (Integrated LED Included)
- Individually Inspected for Quality Assurance
- UL Listed for Safety