

## VN55Q

L70  
25°C

219,000 Hours

### AmberLED Garage Lighter



The LBS AmberLED VN55Q luminaire is available with a shielded IES Type V distribution, and is certified by the Florida Fish & Wildlife Conservation Commission (FWC) for wildlife applications that are directly visible from the shore requiring monochromatic AMBER light. LEDs operate between 585 and 595 nm, greater than 560nm required by FWC. Typical applications include retail centers, hotels, residential covered parking areas, parks, schools and universities, office buildings and medical facilities. Mounting heights of up to 12 feet can be used based on light level and uniformity requirements

#### Specifications and Features:

##### Housing:

Low Profile Die Cast Aluminum Housing, 1/2" Coin Plugs with O-rings for Conduit or External Sensor. Built-in Sensor Housing with Color-Matched UV-Stabilized Polycarbonate Cover. A Clear Cover will be Provided When a Sensor is Ordered. Includes Full Baffle Required to Maintain FWC Certification.

##### Listing & Ratings:

CSA: Listed for Wet Locations, ANSI/UL 1598, 8750.  
(Damp Locations When Used with VNQM.); IP66 Sealed LED Compartment.

##### Finish:

Textured Architectural Bronze or White Powdercoat Finish Over a Chromate Conversion Coating. Custom Colors Available Upon Request.

##### Lens:

Molded UV-Stabilized Acrylic Optical Lens Designed for Garage Lighting Applications.

##### Mounting Options:

Included Easy-Hang Bracket Fits Standard 4" Electrical Box, Allowing One-Person Installation. Optional Quick-Mount/Pendant Bracket Available.

##### AmberLED:

Aluminum Boards

##### Wattage:

39w: Array: 39w, System: 43.4w;  
52w: Array: 52w, System: 57.2w; (Up to 175w HID Equivalent)

##### Driver:

Electronic Driver, 120-277V, 50/60Hz; Less Than 20% THD and PF>0.90. Standard Internal Surge Protection 6kV, 0-10V Dimming Standard for a Dimming Range of 100% to 10%; Dimming Source Current is 150 Microamps.

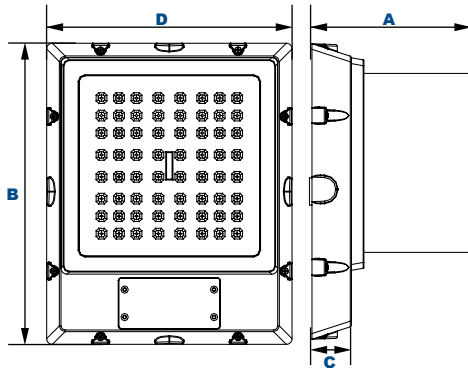
##### Controls:

Fixtures Ordered with Factory-Installed Photocell or Motion Sensor Controls are Internally Wired for Switching and/or 1-10V Dimming Within the Housing. Remote Direct Wired Interface of 1-10V Dimming is Not Implied and May Not Be Available, Please Consult Factory. Fixtures are Tested with LEPC Controls and May Not Function Properly With Controls Supplied By Others. Fixtures are NOT Designed for Use with Line Voltage Dimmers.

##### Warranty:

5-Year Warranty for -40°C to +50°C Environment.

See Page 2 for Projected Lumen Maintenance Table.



#### Dimensions

Width (D)	11 1/4" (285mm)
Length (B)	13 3/4" (350mm)
Height 1 (A)	7 1/2" (193mm)
Height 2 (C)	1 1/8" (47mm)



Certification #2018-001

#### Order Information Example:

VN55QF1X52UAMZSPBF

VN55Q	F		U	AM			BF
Model	Optics	Wattage	Driver	CCT	Color	Options	Shield
VN55Q= AmberLED Garage Lighter	F=Type V	1X39=39w 1X52=52w	U=120-277V	AM=Amber	W=White Z=Bronze C=Custom (Consult Factory)	SF=Single Fuse (120-277V Only) DF=Double Fuse (120-277V Only) SP=Surge Protection PC1=Photocell, 120VAC PC3=Photocell, 120-277VAC S2=Microwave Sensor with Dimming for Mounting Heights of 8 to 40'. (120-277V Only) S4=Microwave On/Off Motion Sensor for Mounting Heights of 8' to 19'. (120-277V Only) QM=Quick Mount/Pendant Mount BU=Battery Backup, 90 Minutes	BF=Baffle

#### Project Information:

Project Name: \_\_\_\_\_ Fixture Type: \_\_\_\_\_

Complete Catalog #: \_\_\_\_\_ Date: \_\_\_\_\_

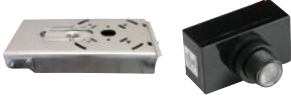
Comments: \_\_\_\_\_

#### Certification & Listings:



### Accessories & Replacement Parts:

Certification #2018-001



VNQM

P18100 & P18103



P17117

P17123

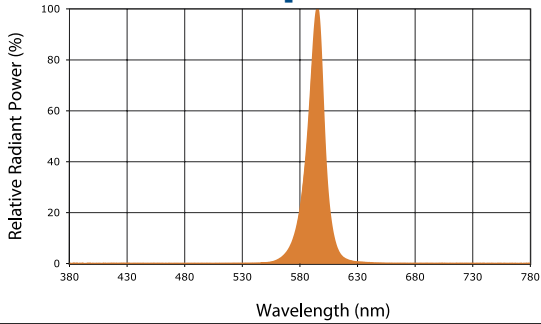
### Replacement Parts (Order Separately, Field Installed)

VNQM	Hinged Quick-Mount Bracket, Stamped Steel, Mount Over Recessed Electrical Box, or Use 3/4" NPS Downrod for Pendant Mounting. CSA Listed for Damp Location Mounting.
P18100	120VAC Photocell
P18103	120-277VAC Photocell
P17117	Internal Microwave Sensor with Dimming for Mounting Heights of 8 to 40'. 120-277VAC, 50/60Hz.
P17123	Internally Mounted Microwave On/Off Motion Sensor for Mounting Heights of 8' to 19', 120-277VAC, 50/60Hz

For Replacement Battery Backup, see the LEPG LED Battery Backup Specification Sheet.

### Photometric Data

#### Amber LED - Spectral Chart



### Photometric Performance

LED Board Watts	Drive Current (mA)	Input Watts	Optics	Amber LEDs	
				Lumens	LPW
AmberLED 39w	117	43	Type V	1,877	43
AmberLED 52w	117	57	Type V	2,292	40

### Projected Lumen Maintenance

Data shown for Amber LEDs			Compare to MH			
TM-21-11	Input Watts	Initial	25,000 Hrs	50,000 Hrs	100,000 Hrs	Calculated LED Life
L70 Lumen Maintenance @ 25°C / 77°F	All wattages up to and including 57w	1.00	0.97	0.93	0.86	219,000
L70 Lumen Maintenance @ 50°C / 122°F		1.00	0.96	0.91	0.82	114,000
L80 Lumen Maintenance @ 40°C / 104°F		1.00	0.95	0.89	0.78	93,000

**NOTES:**

- Projected per IESNA TM-21-11. Data references the extrapolated performance projections for the 117mA base model in a 25°C ambient, based on 10,000 hours of LED testing per IESNA LM-80-08.
- Compare to MH box indicates suggested Light Loss Factor (LLF) to be used when comparing to Metal Halide (MH) systems.